



FEBRUARY 15, 2022

4:30 – 6:00 PM

MENTAL HEALTH ADVISORY BOARD
MINUTES

Mental Health Advisory Board Members Present: Supervisor Monica Brown, Denise Coleman, Vice Chair, Daniel Cotton, Jules D. Hatchett, Rachele Jackson, Chair and Michael Wright. **Absent:** Heather Theaux-Venezio (Excused)

Behavioral Health Services Division Members Present Absent: Emery Cowan, Deputy Director Behavioral Health, Leticia De La Cruz Salas, Behavioral Health Services Administrator, Kate Grammy, Behavioral Health Services Administrator, Tracy Lacey, Senior Mental Health Manager and Sandra Sinz, Behavioral Health Director.

DISCUSSION & ACTION ITEMS

I. CALL TO ORDER/ROLL CALL

The meeting was called to order by Rachele Jackson at 4:30 pm. A quorum was attained.

II. CONFIRMATION OF VIRTUAL DISCUSSION: Consider adopting a resolution of the Mental Health Advisory Board authorizing remote teleconference meetings for the period February 15, 2022 through March 15, 2022 as a result of the continuing Covid-19 pandemic state of emergency.

Rachell Jackson motioned approval to a adopt a resolution of the Mental Health Advisory Board authorizing remote teleconference meetings through March 15, 2022 as a result of the pandemic state of emergency. The motion was properly moved by Jules D. Hatchett and seconded by Denise Coleman. The motion passed with a unanimous vote of 5 in favor and 0 against. *Heather Theaux-Venezio was not present at this meeting.*

III. ITEMS FROM THE PUBLIC

There were no items from the Public on matters listed on the Agenda.

IV. APPROVAL OF FEBRUARY 15, 2022 AGENDA

Rachele Jackson motioned to approve the February 15, 2022 Agenda. The motion was properly moved by Jules D. Hatchett and seconded by Daniel Cotton. The motion passed with a unanimous vote of 5 in favor and 0 against.

V. APPROVAL OF JANUARY 18, 2022 MINUTES

Rachele Jackson motioned to approve the January 18, 2022 Minutes. The motion was properly moved by Denise Coleman and seconded by Jules D. Hatchett. The motion passed with a unanimous vote of 5 in favor and 0 against.

VI. SCHEDULED CALENDAR

1 Routine Business

- a Laura's Law Assisted Outpatient Treatment (AOT) Referrals
- b MH Related Legislation
- c LPS/PES Meeting Discussion

There were no Routine Business updates during this meeting.

2 New Business

There were no New Business updates during this meeting.

VII. WORKFORCE INITIATIVE GRANT PRESENTATION, TIFFÁNI THOMAS, DIRECTOR OF MENTAL HEALTH DIVERSION PROGRAM, NAMI

Tiffáni Thomas, Director Mental Health Diversion Program, NAMI gave a presentation on their mental health diversion peer program. Ms. Thomas shared the program goals and vision. She explained how collaboration with agencies (public defenders, County Behavioral Health, private defense counsel, mental health court

	<p>judges) and case management help individuals with court requirements, court dates, progress reports, transportation needs to court and medical appointments, and share resources for basic needs. <i>Please see attached presentation.</i></p>
VIII.	<p>PUBLIC COMMENTS There were no items from the Public on matters listed on the Agenda.</p>
IX.	<p>STAFF REPORTS 1 Director’s Report 2 MHSA Report There were no Staff Reports updates during this meeting.</p>
X.	<p>COMMITTEE REPORTS 1 Executive Board 2 Membership 3 Outreach and Education There were no Committee Report updates during this meeting</p>
XI.	<p>BOARD DISCUSSION Mental Health Advisory Board (MHAB) Members discuss topics related the mental health and impact on our communities.</p>
XII.	<p>ADJOURN The meeting was adjourned at 5:45 pm by Rachelle Jackson.</p>



Mental Health Diversion Peer Program



National Alliance on Mental Illness

nami | Solano County

Presented by: Tiffáni N. Thomas, EdD
February 15, 2022

Acknowledgment

The NAMI Solano County Mental Health Diversion Peer Program is supported by a Peer Workforce Investment (PWI) grant (7438-CA BHWD-NAMI SOLANO-01) from Advocates for Human Potential, Inc. (AHP). The grant program is made possible by funding from The California Department of Health Care Services (DHCS) Community Services Division.

The content of this presentation is solely the responsibility of the authors and does not necessarily represent the official views of Advocates for Human Potential, Inc or The California Department of Health Care Services.



Introduction



What is Mental Health Diversion?



**California
Law**



**Treatment
vs.
Prosecution**



**Charges
Dismissed**

Goals

Implement

Mental Health
Diversion Peer
Program



Support

Diverted Individuals
on Their Path to
Recovery

Increase

Referrals to the
Mental Health
Diversion Peer
Program



Create

Support Network
of Peer Mentors

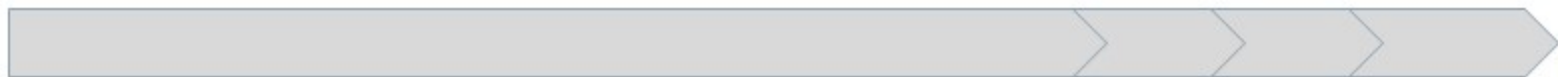
01
Implement
Mental Health
Diversion Peer
Program





- **Program Vision**

The NAMI Solano Mental Health Diversion Peer Program will work in partnership with the Solano County Courts to improve and sustain Mental Health Diversion for justice involved individuals with mental illness. The NAMI Mental Health Diversion Peer Program will use peer case managers to identify, support, mentor, and assist individuals with mental illness in receiving appropriate treatment in the community.





02

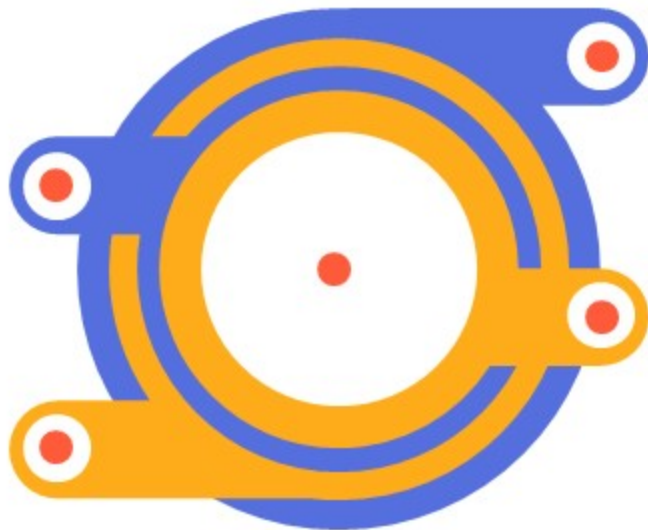
Increase

Referrals to the
Mental Health
Diversion Peer
Program

Collaboration

**Public Defender &
Alternate Defender**

**County Behavioral
Health**



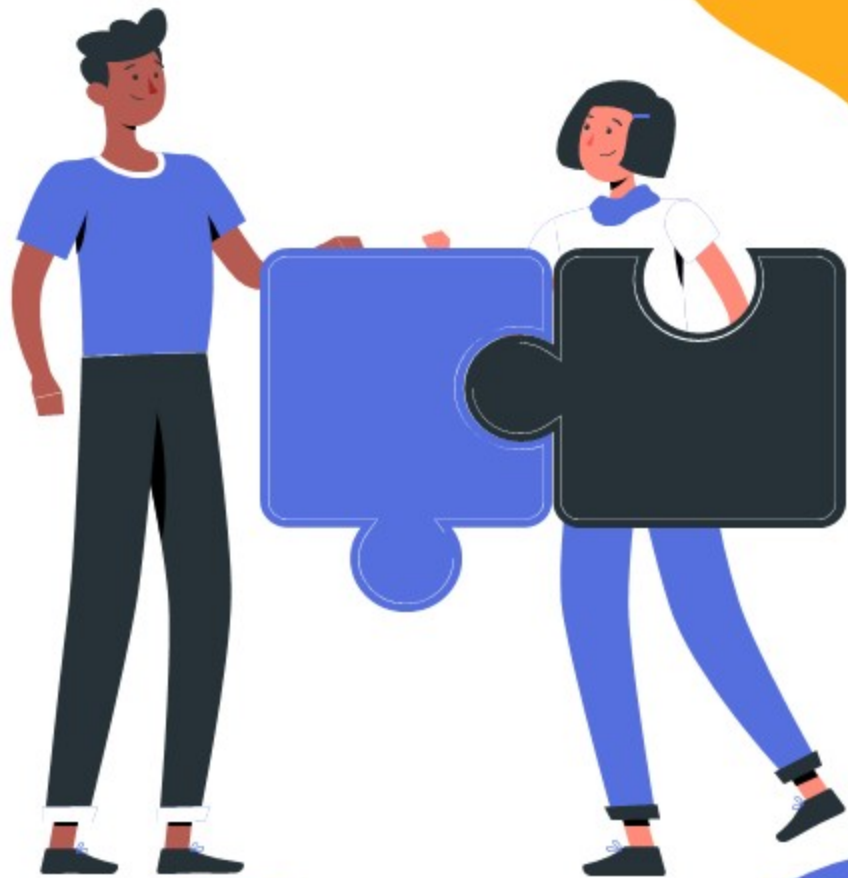
**Private Defense
Counsel**

**Mental Health
Court Judges**

03

Support

Diverted
Individuals
on Their Path
to Recovery





Case Management

To assist the diverted individual in complying with their court requirements, remind them to attend court dates and request progress reports, arrange transportation to doctor's appointments, and help locate resources for their basic needs.

*NAMI Solano **does not** provide Case Management to individuals who are on Medi-Cal in Solano County.

Eligibility for NAMI Mental Health Diversion Case Management

- Individual has an open case in Solano County Mental Health Diversion Court;
- Individual is actively on Mental Health Diversion in Solano County; and
- Individual has private (i.e. Kaiser Permanente, etc.) or out of county health insurance.

Peer Support



to empower and engage individuals who have been diverted and are recovering from mental illness. Peer support often comes in the form of peer counseling, encouragement, accountability, and advice aimed at assisting individuals in their recovery.

Eligibility for NAMI Mental Health Diversion Peer Support

- Individual has an open case in Solano County Mental Health Diversion Court; and
- Individual is actively on Mental Health Diversion in Solano County.

04

Create

Support Network
of Peer Mentors



••

Thank You!

Do you have any questions?

Dr. Tiffáni N. Thomas
Director, Mental Health Diversion Program
tiffani@namisolanoounty.org
707.920.1830

