

# SOLANO COUNTY

2007



## CROP & LIVESTOCK REPORT

**Jim Allan**  
Agricultural Commissioner  
Sealer of Weights and Measures



## DEPARTMENT OF AGRICULTURE

*Agricultural Commissioner/Weights and Measures*  
501 Texas Street Fairfield, CA 94533  
Phone (707) 784-1310 Fax (707) 784-1330

To: A.G. Kawamura, Secretary  
California Department of Food and Agriculture

and

The Honorable Board of Supervisors  
County of Solano, California

Pursuant to the provisions of Sections 2279 and 2272 of the California Food and Agricultural Code, I am pleased to present the Solano County Crop and Livestock Report for 2007. Also included is the 2007 Sustainable Agriculture Report.

The gross value of Solano County's agricultural production for 2007 was \$268,255,200, which represents an increase of \$34,750,200 over 2006 values and an all time high for Solano County. This represents a 14.88% increase from the 2006 production estimates. Growers benefitted from higher prices paid to producers in many commodity groups as well as more favorable weather patterns than those seen in 2006. Despite the record returns, many growers have seen shrinking margins as energy and transportation costs along with labor have often risen out of proportion to income. It must be emphasized that this report does not reflect the total contribution agriculture makes to the economy of Solano County. A multiplier effect stemming from transportation, processing, marketing and other farm-related services re-spends agricultural dollars to the benefit of the local economy.

Solano County farmers and ranchers produced approximately 80 different crops and commodities in 2007. Twenty-two of those crops exceeded \$1,000,000 in value. Nursery stock held on to its number one ranking with a value of \$56,610,700, followed by alfalfa at \$24,679,900 and tomatoes at \$23,955,200. Cattle and calves, walnuts, milk, wine grapes, almonds, field corn, and sheep and lambs rounded out the top ten crops for 2007.

I would like to express my sincere appreciation to all of the farmers, ranchers, boards, commissions, and agencies who contributed vital data without which this report would not be possible. Special recognition is given to Shirley Tavare, Keri Brumfield and Sandy Culbertson of my staff for their dedication to compiling and producing the 2007 Solano County Crop and Livestock Report.

For additional copies of this report, our 2007 summary crop report, or to learn more about the services provided and programs of the Solano County Department of Agriculture and Weights and Measures, visit our website at [www.solanocounty.com/ag](http://www.solanocounty.com/ag).

Respectfully submitted,

Jim Allan  
Agricultural Commissioner/Sealer of Weights and Measures

# **SOLANO COUNTY BOARD OF SUPERVISORS**

**Barbara Kondylis, District 1**  
**John Silva, District 2, Chairman**  
**Jim Spering, District 3**  
**John Vasquez, Vice Chairman, District 4**  
**Mike Reagan District 5**

## **COUNTY ADMINISTRATIVE OFFICER**

**Michael D. Johnson**

## **AGRICULTURE DEPARTMENT STAFF**

AGRICULTURAL COMMISSIONER/  
SEALER OF WEIGHTS AND MEASURES  
**Jim Allan**

DEPUTY AGRICULTURAL COMMISSIONER/  
SEALER OF WEIGHTS AND MEASURES  
**Janet Jessen**  
**Linda Pinfeld**  
**Dave Singh**

SENIOR AGRICULTURAL BIOLOGIST/  
WEIGHTS AND MEASURES INSPECTORS  
**Manny DeVera**  
**Johnnie Johnson**  
**Dave Schroeder**  
**Shirley Tavare**

SENIOR AGRICULTURAL BIOLOGIST  
**Laura Tripp**

AGRICULTURAL BIOLOGIST/  
WEIGHTS AND MEASURES INSPECTORS  
**Ivan Godwyn**  
**Oliver Hardwick**  
**Steve Paris**

AGRICULTURAL BIOLOGIST/  
WEIGHTS AND MEASURES INSPECTOR TRAINEES  
**Keri Brumfield**  
**Mark Daniels Jr.**  
**Thea Nohaft**

OFFICE SUPERVISOR  
**Ann McKay**

OFFICE ASSISTANT II's  
**Sandra Culbertson**  
**Socorro LaForga**  
**Cynthia Smith**

## GENERAL INFORMATION

**SOLANO COUNTY POPULATION = 426,757** (January 1, 2008 CA Department of Finance)

<b>Benicia</b> 27,978	<b>Dixon</b> 17,577	<b>Fairfield</b> 106,753	<b>Rio Vista</b> 8,071
<b>Suisun</b> 28,193	<b>Vacaville</b> 96,905	<b>Vallejo</b> 121,097	<b>Unincorporated</b> 20,183

## SOLANO COUNTY STATE RANKING

**By Gross Value of Agricultural Production = 30th (2006)**  
**For Leading Commodities - Gross Values of Production 2006:**

2nd **Hay, Sudan**  
 5th **Sheep & Lambs**

<b>AREA</b>		<b>FARM SIZE</b>	
California Total Land Area 2002 (Acres)	99,813,971	Average US Size (Acres 2007)	449
California Agricultural Land 2007 (Acres)	26,200,000	Average California Size (Acres 2007)	349
County (Square Miles - Land)	829.20	Average Solano County (Acres 2002)	384
County (Acres - Land)	532,623		
County (Acres - Urban & Built-up Land 2006)	58,628	<b>NUMBER OF FULL-TIME FARMS IN SOLANO COUNTY</b>	
County (Square Miles - Water)	77.70	(Year 2002) 558	
County (Acres - Water)	49,749	<b>TOTAL SECURED ASSESSED PROPERTY VALUE</b>	
		(2007-2008) \$45,751,600,906	

## SOLANO COUNTY FARMING REGIONS

Dixon Ridge Elmira/Maine Prairie Green Valley	Jepson Prairie Montezuma Hills Pleasants/Vaca/Lagoon Valleys Ryer Island	Suisun Valley Western Hills Winters
---	---	---

## SOLANO COUNTY TRANSPORTATION

**Total Road Miles = 587** (Unincorporated Area - December 31, 2007)

<b>Paved Road Miles</b>	470
<b>Gravel Road Mile</b>	117

### BRIDGES

92

### MAJOR ROADWAYS

Interstates 80, 505, 680, 780  
 Hwys 12, 29, 37, 84, 113, 220

### RAILROADS

Amtrak, California  
 Northern, Southern

## SOLANO COUNTY FACILITIES

Travis Air Force Base, University of California at Davis, California  
 Maritime Academy, Nut Tree Airport

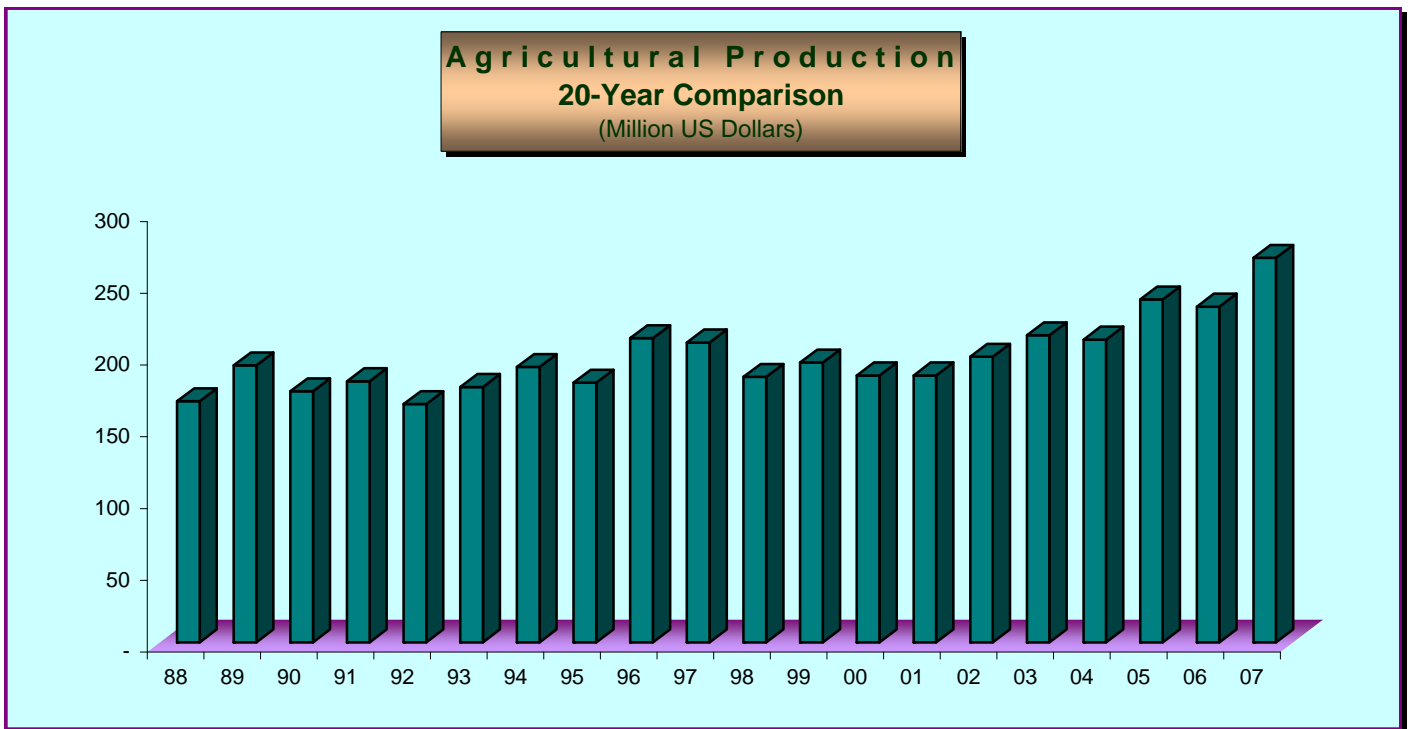
## GRAND TOTAL OF ALL AGRICULTURAL PRODUCTS (US DOLLARS)

2007      \$268,255,200  
2006      \$233,505,000

### VALUE SUMMARY

YEAR	FIELD CROPS	NURSERY	FRUIT & NUT CROPS	SEED CROPS	VEGETABLE CROPS	ANIMAL PRODUCTION	YEAR TOTALS
1998	61,301,200	26,408,000	22,998,900	9,318,000	36,775,400	28,377,000	185,178,500
1999	55,959,800	28,978,000	29,578,400	7,987,200	44,285,400	28,693,700	195,482,500
2000	47,493,400	35,044,700	29,801,800	5,075,100	33,893,900	34,265,500	185,574,400
2001	48,209,300	37,668,100	26,634,100	4,897,700	33,079,600	35,181,700	185,670,500
2002	47,901,800	38,781,200	25,974,800	5,739,700	37,155,000	43,933,000	199,485,500
2003	43,945,500	42,373,400	26,518,000	5,326,600	35,663,700	60,295,600	214,122,800
2004	50,423,200	43,645,000	*29,285,900	7,114,600	36,903,400	45,207,100	*211,229,900
2005	52,812,700	50,018,000	37,918,500	10,533,500	36,505,000	50,901,900	238,689,600
2006	46,945,500	47,856,000	39,964,300	9,987,600	40,899,400	47,852,200	\$233,505,000
2007	54,811,900	56,610,700	43,430,000	10,820,900	47,762,100	54,819,600	\$268,255,200

\*Revised 2004 Figure



**MILLION DOLLAR CROPS**  
**(US DOLLARS)**

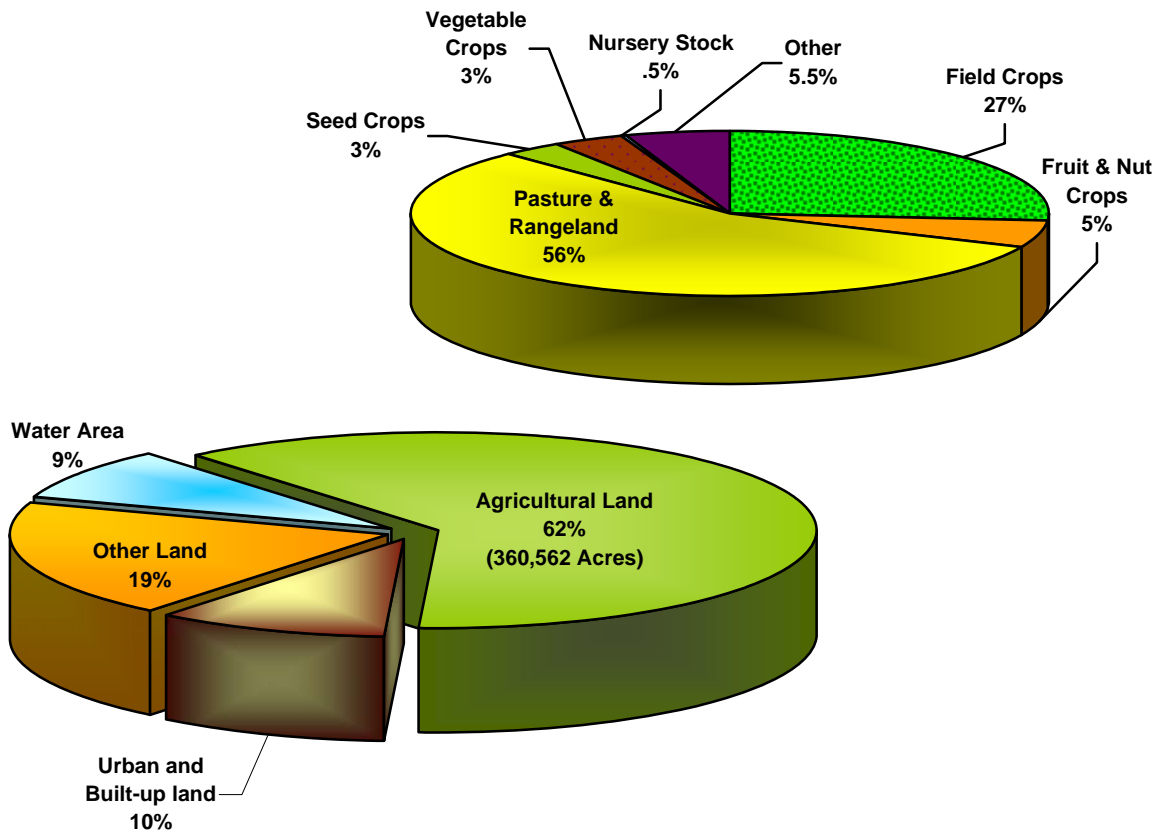
		<b>RANKING</b>	
		<b>2007</b>	<b>2006</b>
<b>NURSERY PRODUCTS</b>	<b>\$56,610,700.00</b>	<b>1</b>	<b>1</b>
<b>ALFALFA</b>	<b>24,679,900.00</b>	<b>2</b>	<b>3</b>
<b>TOMATOES, PROCESSING</b>	<b>23,955,200.00</b>	<b>3</b>	<b>4</b>
<b>CATTLE &amp; CALVES</b>	<b>23,273,200.00</b>	<b>4</b>	<b>2</b>
<b>WALNUTS</b>	<b>21,955,300.00</b>	<b>5</b>	<b>5</b>
<b>MILK, MARKET</b>	<b>17,022,200.00</b>	<b>6</b>	<b>6</b>
<b>GRAPES, WINE</b>	<b>8,095,000.00</b>	<b>7</b>	<b>7</b>
<b>ALMONDS</b>	<b>6,935,100.00</b>	<b>8</b>	<b>8</b>
<b>CORN, FIELD</b>	<b>6,761,100.00</b>	<b>9</b>	<b>20</b>
<b>SHEEP &amp; LAMBS</b>	<b>6,489,300.00</b>	<b>10</b>	<b>10</b>
<b>WHEAT, IRRIGATED</b>	<b>5,338,800.00</b>	<b>11</b>	<b>17</b>
<b>SUNFLOWER SEED, CERTIFIED</b>	<b>5,117,000.00</b>	<b>12</b>	<b>12</b>
<b>SUDANGRASS</b>	<b>3,627,200.00</b>	<b>13</b>	<b>11</b>
<b>BELL PEPPERS</b>	<b>3,326,700.00</b>	<b>14</b>	<b>16</b>
<b>PASTURE, RANGELAND</b>	<b>3,253,300.00</b>	<b>15</b>	<b>13</b>
<b>RYEGRASS</b>	<b>2,383,500.00</b>	<b>16</b>	<b>22</b>
<b>PRUNES (DRIED PLUMS)</b>	<b>2,144,200.00</b>	<b>17</b>	<b>9</b>
<b>PASTURE, IRRIGATED</b>	<b>2,098,400.00</b>	<b>18</b>	<b>14</b>
<b>BEANS, DRY SEED</b>	<b>1,795,000.00</b>	<b>19</b>	<b>—</b>
<b>WHEAT, DRYLAND</b>	<b>1,445,800.00</b>	<b>20</b>	<b>15</b>
<b>SAFFLOWER OIL</b>	<b>1,445,000.00</b>	<b>21</b>	<b>21</b>
<b>SUNFLOWER SEED, NON CERTIFIED</b>	<b>1,044,000.00</b>	<b>22</b>	<b>18</b>
<b>BEANS, EDIBLE DRY</b>	<b>—</b>	<b>—</b>	<b>19</b>
<b>POLLINATION</b>	<b>—</b>	<b>—</b>	<b>23</b>

## DISTRIBUTION OF FARM ACREAGE

	2007	2006
<b>FIELD CROPS</b>	95,030	92,155
<b>FRUIT &amp; NUT CROPS<sup>1</sup></b>	18,656	19,072
<b>PASTURE &amp; RANGELAND</b>	202,826	202,826
<b>SEED CROPS</b>	11,474	13,283
<b>VEGETABLE CROPS</b>	12,054	12,236
<b>NURSERY PRODUCTS</b>	1,530	1,827
<b>OTHER<sup>2</sup></b>	18,992	19,163
<b>TOTALS</b>	<b>360,562</b>	<b>360,562</b>

## Land Use Categories

Department of Conservation 2004-2006 Land Use Conversion Report



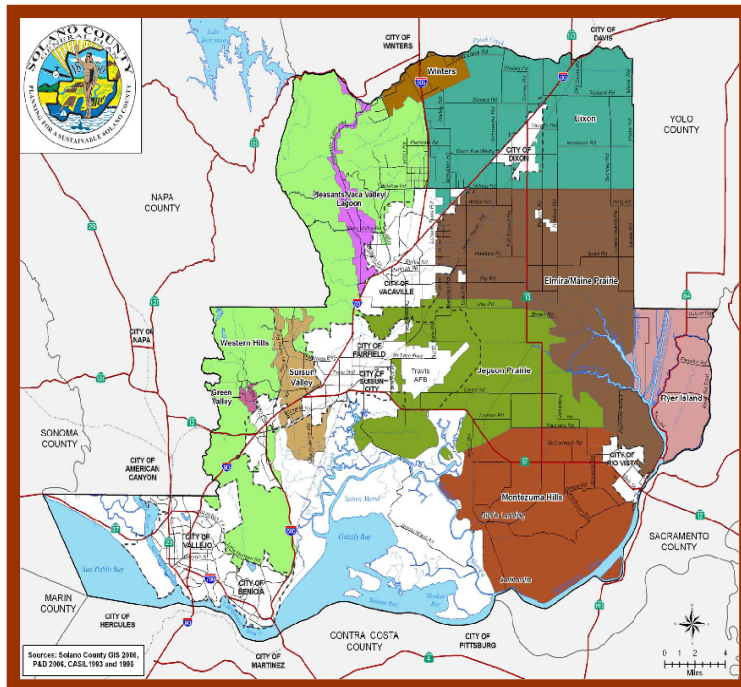
<sup>1</sup>Includes Non-Bearing Acreage

<sup>2</sup>Includes Fallow, Cover Crops Not Harvested, Land Temporarily out of Production, Production Acreage Not Reported, etc.

# ACREAGE 2007

## Fruit and Nut Crops

	Bearing Acreage	Non-Bearing Acreage	Total Acreage
<b>ALMONDS</b>	2,263	887	3,150
<b>APPLES</b>	151	1	152
<b>APRICOTS</b>	152	0	152
<b>CHERRIES</b>	90	7	97
<b>FIGS</b>	2	0	2
<b>GRAPES (WINE)</b>	4,021	261	4,282
<b>KIWI</b>	25	0	25
<b>NECTARINES</b>	11	0	11
<b>OLIVES</b>	84	11	95
<b>ORANGES</b>	26	0	26
<b>PEACHES (Freestone)</b>	142	14	156
<b>PEARS (Bartlett)</b>	465	65	530
<b>PEARS (Others)</b>	111	0	111
<b>PECANS</b>	3	0	3
<b>PLUOTS</b>	9	0	9
<b>PERSIMMONS</b>	13	0	13
<b>PISTACHIO NUTS</b>	18	0	18
<b>PLUMS</b>	20	0	20
<b>PRUNES</b>	1,291	0	1,291
<b>TANGERINES</b>	13	0	13
<b>WALNUTS (English)</b>	7,561	914	8,475
<b>WALNUTS (Black)</b>	25	0	25
<b>TOTALS</b>	<b>16,496</b>	<b>2,160</b>	<b>18,656</b>



- Agricultural Regions**
- Dixon
  - Elmira/Main Prairie
  - Green Valley
  - Jepson Prairie
  - Montezuma Hills
  - Pleasants/Vaca Valley/Lagoon
  - Ryer Island
  - Suisun Valley
  - Western Hills
  - Winters



## ACREAGE, PRODUCTION & VALUE

### Fruit and Nut Crops

CROP	YEAR	BEARING ACRES	PER	TOTAL	UNIT	PER UNIT	TOTAL VALUE
<b>ALMOND</b> Meats	2007	2,263	0.93	2,097.09	Ton	3,307	6,935,100
	2006	2,106	0.61	1,282.60	Ton	4,116	5,279,200
<b>CHERRIES</b> Fresh Market	2007	90	2.67	240.30	Ton	3,809	915,300
	2006	85	1.08	91.80	Ton	2,909	267,000
<b>GRAPES, WINE<sup>2</sup></b> Dark Varieties	2007	-	-	5,345.70	Ton	801	4,281,900
	2006	-	-	5,956.30	Ton	839	4,997,300
White Varieties	2007	-	-	6,737.50	Ton	566	3,813,100
	2006	-	-	6,443.30	Ton	668	4,304,100
<b>TOTAL<sup>3</sup></b>	2007	4,021	3.01	12,083.20	Ton	-	8,095,000
	2006	4,293	2.89	12,399.60	Ton	-	9,301,400
<b>PEACHES<sup>1,3 &amp; 5</sup></b>	2007	142	3.18	451.94	Ton	1,242	561,300
	2006	138	1.39	191.82	Ton	588	112,800
<b>PRUNES<sup>1</sup></b> (Dried Plums)	2007	1,291	1.22	1,569.70	Ton	1,366	2,144,200
	2006	1,326	2.66	3,526.00	Ton	1,288	4,541,500
<b>STRAWBERRIES<sup>6</sup></b>	2007	27	-	-	Flat	17.90	223,400
<b>WALNUTS</b>	2007	7,561	1.48	11,190.28	Ton	1,962	21,955,300
	2006	7,379	1.55	11,437.45	Ton	1,584	18,116,900
<b>MISC FRUITS &amp; NUTS<sup>4</sup></b>	2007	930	-	-	-	-	2,600,400
	2006	1,298	-	-	-	-	2,245,500
<b>TOTAL FRUIT &amp; NUT CROPS</b>	2007	16,325					\$43,430,000
	2006	16,625					\$39,964,300

<sup>1</sup>Some figures may not add due to rounding

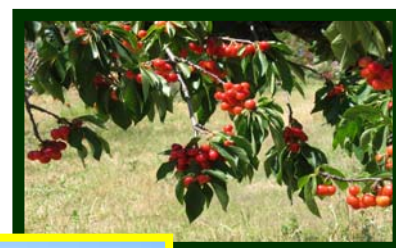
<sup>2</sup>Price Varies by Variety

<sup>3</sup>Includes acreage not harvested

<sup>4</sup>Misc Fruits & Nuts include Almond Hulls, Apples, Apricots, Blackberry, Citrus, Fig, Kiwi, Nectarines, Olives, Pears, Persimmons, Pistachios, Plums, Table Grapes, etc.

<sup>5</sup>Includes fresh and processed

<sup>6</sup>Previously reported in Misc Fruits & Nuts



## ACREAGE, PRODUCTION & VALUE

### Vegetable Crops

CROP	YEAR	HARVESTED		TOTAL	UNIT	PER UNIT	TOTAL VALUE
		ACRES	ACRE				
TOMATOES, PROCESSING	2007	9,700	38.59	374,300	Ton	64.00	23,955,200
	2006	10,000	34.76	347,600	Ton	59.84	20,800,400
BELL PEPPERS	2007	776	18.97	14,720	Ton	226.00	3,326,700
	2006	673	18.13	12,201	Ton	212.00	2,586,700
MISC. VEGETABLES <sup>1</sup>	2007	1,578	-	-	-	-	20,480,200
	2006	1,563	-	-	-	-	17,512,300
<b>TOTAL VEGETABLE CROPS</b>	2007	12,054					<b>\$47,762,100</b>
	2006	12,236					<b>\$40,899,400</b>

<sup>1</sup> Misc Vegetables include Beans, Beets, Broccoli, Cabbage, Carrots, Cucumber, Endive, Garlic, Herbs, Mushrooms, Onion, Peppers, Pumpkin, Salad Greens, Sprouts, Squash, Sweet Corn, Tomatillo, Tomatoes, etc.



## ACREAGE & VALUE

### Nursery Products

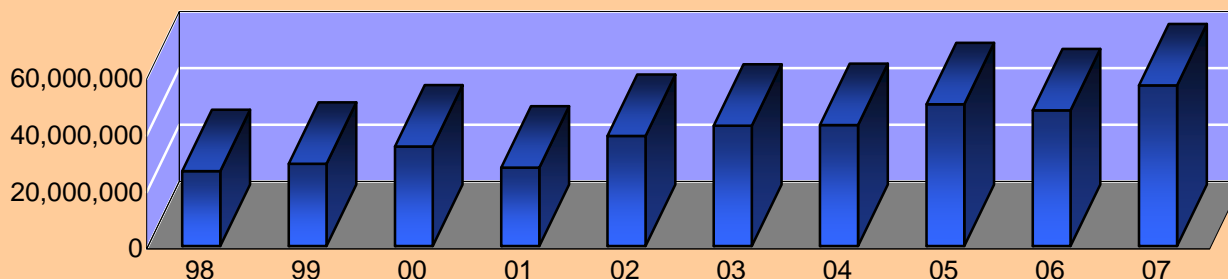
ITEM	YEAR	ACREAGE	TOTAL VALUE
<b>Nursery Stock<sup>1</sup></b>	2007	1328	53,387,200
	2006	1827	47,856,000
<b>Propagative Stock<sup>2</sup></b>	2007	202	3,223,500
<b>TOTAL NURSERY STOCK</b>	<b>2007</b>	<b>1530</b>	<b>56,610,700</b>

<sup>1</sup>Nursery Stock Includes Bedding Plants, Christmas Trees, Cut Flowers, Fruit Trees, Greenhouse, Herbaceous Perennials, Turf, and Woody Ornamentals

<sup>2</sup>Cuttings and Rootstock Previously Included in Nursery Stock

## NURSERY STOCK

10-Year Value Summary  
(Million US Dollars)



# ACREAGE, PRODUCTION & VALUE

## Field Crops

CROP	YEAR	HARVESTED			UNIT	PER UNIT	TOTAL	
		ACRES	PER ACRE	TOTAL			VALUE	
BARLEY	2007	550	0.95	523	Ton	162.00	84,700	
	2006	572	1.82	1,041	Ton	102.00	106,200	
BEANS, DRY <sup>1</sup> Edible, all classes <sup>2</sup>	2007	-	-	-	-	-	-	
	2006	2,894	1.04	3,010	Ton	757.00	2,278,400	
CORN, FIELD	2007	8,282	5.63	46,628	Ton	145.00	6,761,100	
	2006	2,836	4.67	13,244	Ton	110.00	1,456,900	
CORN, SILAGE <sup>3</sup>	2007	600	31.5	18,900	Ton	27.00	510,300	
HAY	Alfalfa	2007	29,483	6.39	188,396	Ton	131.00	24,679,900
		2006	36,304	5.49	199,309	Ton	117.00	23,319,100
	Grain	2007	2,200	1.77	3,894	Ton	130.00	506,200
		2006	2,580	3.24	8,359	Ton	94.00	785,800
	Grass	2007	1,150	2.23	2,565	Ton	110.00	282,200
		2006	1,522	2.51	3,820	Ton	73.00	278,900
PASTURE, IRRIGATED <sup>4</sup>	2007	22,088	-	-	Acre	95.00	2,098,400	
	2006	31,699	-	-	Acre	87.00	2,757,800	
PASTURE, RANGELAND <sup>5</sup>	2007	180,738	-	-	Acre	18.00	3,253,300	
	2006	171,127	-	-	Acre	17.00	2,909,200	
RYEGRASS	2007	8,186	2.51	20,547	Ton	116.00	2,383,500	
	2006	7,608	2.42	18,411	Ton	75.00	1,380,900	
SAFFLOWER, OIL	2007	4,200	0.94	3,948	Ton	366.00	1,445,000	
	2006	5,764	0.88	5,072	Ton	280.00	1,420,200	
SUDANGRASS	2007	6,863	3.62	24,844	Ton	146.00	3,627,200	
	2006	8,360	3.66	30,598	Ton	133.00	4,069,500	
TRITICALE	2007	507	2.91	1,475	Ton	141.00	208,000	
WHEAT	Irrigated	2007	14,068	2.53	35,592	Ton	150.00	5,338,800
		2006	9,221	2.20	20,286	Ton	122.00	2,474,900
	Dryland	2007	12,507	0.85	10,631	Ton	136.00	1,445,800
		2006	12,273	1.69	20,741	Ton	129.00	2,675,600
MISC FIELD CROPS <sup>6</sup>	2007	6,434	-	-	-	-	2,187,500	
	2006	2,221	-	-	-	-	1,032,100	
TOTAL FIELD CROPS	2007	297,856	-	-	-	-	\$ 54,811,900	
	2006	294,981	-	-	-	-	\$ 46,945,500	

<sup>1</sup>2007 Included in Misc to Avoid Disclosure of Individual Operations

<sup>2</sup>Value and Yield Vary by Variety

<sup>3</sup>Previously Included in Misc Field Crops

<sup>4</sup>Data Source - 2007 Restricted Material Permit Program

<sup>5</sup>Calculated Using Data From Calif Dept of Conservation 2004-2006  
Land Use Conversion Report

<sup>6</sup>Misc Field Crops Include, Garbanzo Beans, Grass Hay Silage,  
Lima Beans, Straw, and Stubble

## PRODUCTION & VALUE

### Livestock & Poultry

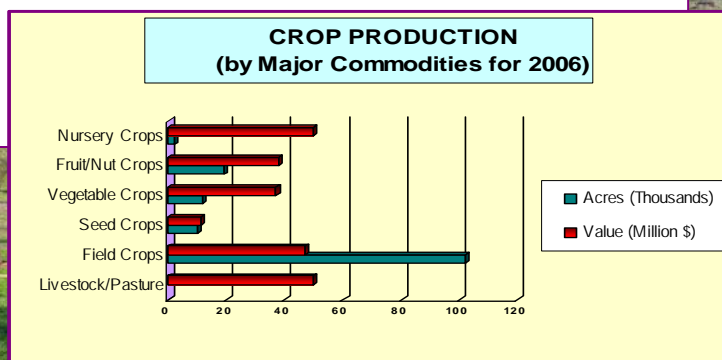
ITEM	YEAR	NUMBER OF HEAD	TOTAL LIVELWEIGHT	UNIT	UNIT VALUE	TOTAL VALUE
CATTLE & CALVES	2007	35,640	263,749	Cwt	88.24	23,273,200
	2006	36,000	291,654	Cwt	86.21	25,143,500
SHEEP & LAMBS	2007	46,731	64,073	Cwt	101.28	6,489,300
	2006	43,269	53,104	Cwt	79.93	4,244,600
MISCELLANEOUS <sup>1</sup>	2007	-	-	-	-	6,662,800
	2006	-	-	-	-	6,553,200
<b>TOTAL LIVESTOCK &amp; POULTRY</b>	2007					<b>\$36,425,300</b>
	2006					<b>\$35,941,300</b>

<sup>1</sup>Miscellaneous includes Cull Cows, Dairy Calves, Dairy Replacement Heifers, Eggs, Feeder Lambs, Goats, Poultry, Stocker Calves

## PRODUCTS AND VALUE

### Livestock, Poultry & Apiary

ITEM	YEAR	PRODUCTION	UNIT	UNIT VALUE	TOTAL VALUE	
BEES	Pollination <sup>1</sup>	2007	17,006	Colony	57.77	982,400
		2006	15,891	Colony	64.90	1,031,400
	Apiary Products <sup>2</sup>	2007	-	-	-	110,700
		2006	-	-	-	204,800
MILK	Market	2007	909,792	Cwt	18.71	17,022,200
		2006	865,568	Cwt	12.10	10,473,400
	Manufacturing	2007	-	-	-	-
		2006	108	Cwt	9.26	1,000
WOOL	2007	306,612	Lb	0.91	279,000	
	2006	308,083	Lb	0.65	200,300	
<b>TOTAL LIVESTOCK, POULTRY &amp; APIARY</b>	2007				<b>\$18,394,300</b>	
	2006				<b>\$11,910,900</b>	



<sup>1</sup>2007 Values Based on Pollinated Acreage and Number of Colonies used for Adequate Pollination. Pollination Fee Varies by Crop. Crops Pollinated Include Almond, Apple, Cherry, Kiwi, Prune, Sunflower & Vine Seed

<sup>2</sup>Apiary Products include Bee Packages, Honey, & Queens

# ACREAGE, PRODUCTION & VALUE

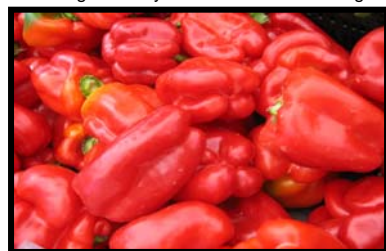
## Seed Crops

CROP	YEAR	HARVESTED		TOTAL	UNIT	PER UNIT	TOTAL VALUE	
		ACRES	PER					
<b>BEANS, DRY<sup>1</sup></b>	All Market	2007	1,804	1.07	1,930	Ton	843.00	1,627,000
	Classes	2006	1,068	0.58	619	Ton	698.00	432,400
	All Market	2007	412	0.51	210	Ton	800.00	168,000
	Classes, Certified	2006	854	0.84	717	Ton	692.00	496,400
	<b>TOTAL</b>	2007	2,216					1,795,000
	<b>BEANS, DRY</b>	2006	1,922					928,800
<b>CUCUMBER</b>	2007	391	101.30	39,608	Lb	10.66	422,200	
	2006	456	106.00	48,336	Lb	16.78	811,100	
<b>SQUASH<sup>2</sup></b>	2007	-	-	-	-	-	-	
	2006	115	259.00	29,785	Lb	5.15	153,400	
<b>SUNFLOWER</b>	2007	1,029	0.70	720	Ton	1450.00	1,044,000	
	Non Certified	2006	3,232	0.48	1,551	Ton	1567.00	2,430,400
	Certified	2007	5,041	0.70	3,529	Ton	1450.00	5,117,000
		2006	3,383	0.50	1,692	Ton	1857.00	3,142,000
	<b>TOTAL</b>	2007	6,070					6,161,000
	<b>SUNFLOWER</b>	2006	6,615					5,572,400
<b>WATERMELON</b>	2007	441	305.65	134,792	Lb	3.64	490,600	
	2006	316	351.00	110,916	Lb	3.25	360,500	
<b>WHEAT</b>	Certified	2007	1,600	2.75	4,400	Ton	160.00	704,000
<b>MISC SEED<sup>3</sup></b>	2007	756	-	-	-	-	1,248,100	
	2006	3,859	-	-	-	-	2,161,400	
<b>TOTAL SEED CROPS</b>	2007	11,474					\$10,820,900	
	2006	13,283					\$9,987,600	

<sup>1</sup>Value and Yield Vary by Variety

<sup>2</sup>Included in Miscellaneous

<sup>3</sup>Misc Seed includes Melon, Onion, Pepper, Pumpkin, Sorghum/Milo, Sudangrass, Squash, Watermelon, and Triticale  
Some figures may not add due to rounding



# COUNTY BIOLOGICAL CONTROL

PEST	BIOCONTROL AGENT	SCOPE OF PROGRAM
Light Brown Apple Moth <i>(Epiiphyas postvittana)</i>	Pheromone (41,300 Isomate LBAM Plus Pheromone Twist Ties)	9 Treatment Areas in Vallejo/Mare Island
Mediterranean Fruit Fly <i>(Ceratitis capitata)</i>	Sterile Male Mediterranean Fruit Flies (72,356,400 Released)	13.5 Square Miles in Dixon
Yellow Star Thistle <i>(Centaurea solstitialis)</i>	Bud Weevil ( <i>Bangasternus orientalis</i> ) Flower Weevil ( <i>Larinus curtus</i> ) Hairy Weevil ( <i>Eustenopus villosus</i> ) Gall Fly ( <i>Urophora sirunaseva</i> ) Rust ( <i>Puccinia jaceae var. solstitialis</i> )	9 Sites 2 Sites 4 Sites 2 Sites 2 Sites
Purple Star Thistle <i>(Centaurea calcitrapa)</i>	Weevil ( <i>Larinus minutus</i> ) Seed Head Fly ( <i>Terrelia Sp.</i> )	2 Sites

PEST	INSPECTED	NUMBER OF INSPECTIONS
Glassywinged Sharpshooter <i>(Homalodisca coagulata)</i>	1,386 Nursery, Urban, Delimitation Traps	26,882 Trap Inspections 7,465 Properties Surveyed 1,268 Nursery Shipments
Gypsy Moth <i>(Lymantria dispar)</i>	Outdoor Household Goods	28 Shipments
Sudden Oak Death <i>(Phytophthora ramorum)</i>	Nursery, Greenwaste, Wood Products, Soil, etc.	103
Exotic Pests	Incoming Packages, Plant Shipments, Trucks, Seeds, etc.	3,695
Export International Interstate & Intrastate	Raw Agricultural (plant) Products	1,046 Phytosanitary Certificates 209 State Quarantine & Phytosanitary
Apple Maggot, Gypsy Moth, Japanese Beetle, Khapra Beetle, Mediterranean Fruit Fly <sup>1</sup> , Melon Fly, Olive Fruit Fly, Oriental Fruit Fly, & Light Brown Apple Moth	4,104 Pest Detection Traps  <sup>1</sup> Mediterranean Fruit Fly Larval Survey	40,646  <sup>1</sup> 40 Properties Sampled (933 Lbs of Fruit Cut for Inspection)
Seed for Export	6,834 Acres Seed Crops (Phytosanitary Field)	

## ORGANIC FARMING STATISTICS

FARMS	ACRES	APPROXIMATE VALUE
30	Approximately 1,158	\$8,366,400
(Almonds, Apples, Apricots, Beans, Broccoli, Carrots, Cherries, Citrus, Cut Flowers, Eggs, Endive, Fig, Herbs, Kiwi, Melons, Micro Greens, Olives, Peaches, Pears, Persimmons, Plums, Sprouts, Squash, Tomatoes, Walnuts, Wine Grapes, etc.)		