



# Benicia Road Complete Streets: Investments in Comfortable Streetscape

---

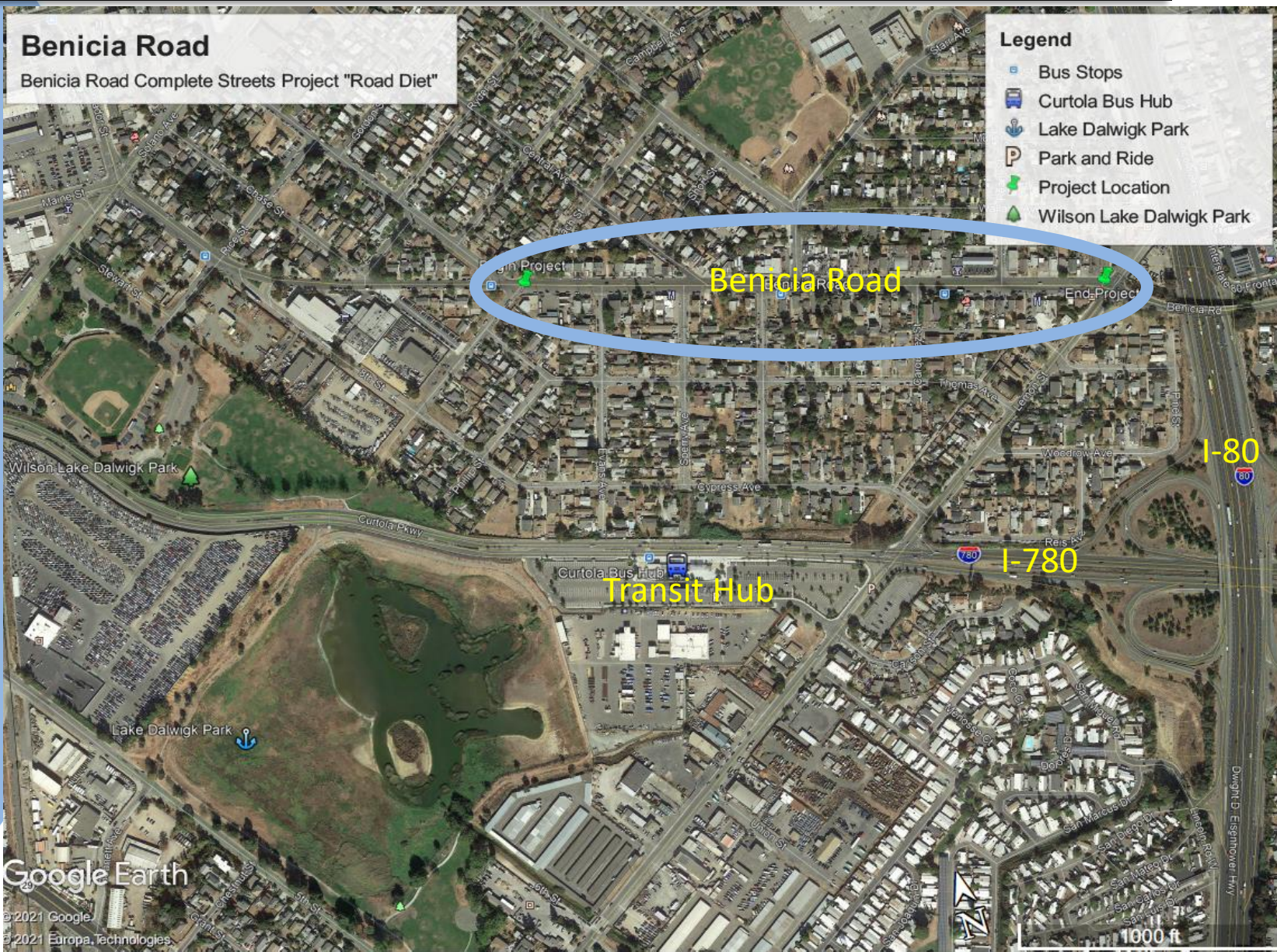
A Community Open House Presentation and Discussion on  
Planned Improvements along Benicia Road

Presented by Department of Resource Management

- Matt Tuggle, P.E., Engineering Manager
- Craig Pyle, P.E., Engineering Services Supervisor
- Frances Neade, Senior Engineering Technician



# Benicia Road – Beach St. to Lemon St.





# Benicia Road Existing Conditions



## Community Highlights:

- Mixed residential and commercial zoning/buildings
- Investment corridor
- Walking community
- Access corridor for schools, Transit Hub, Parks, and Vallejo downtown

## Investment Considerations:

- Existing 4 lane road
  - Higher critical speeds
  - Accident profile
  - No bike lanes
- Small transit stops
- Narrow sidewalks



# Enhanced Mobility: A Comfortable Walk

## Solutions for Better Mobility

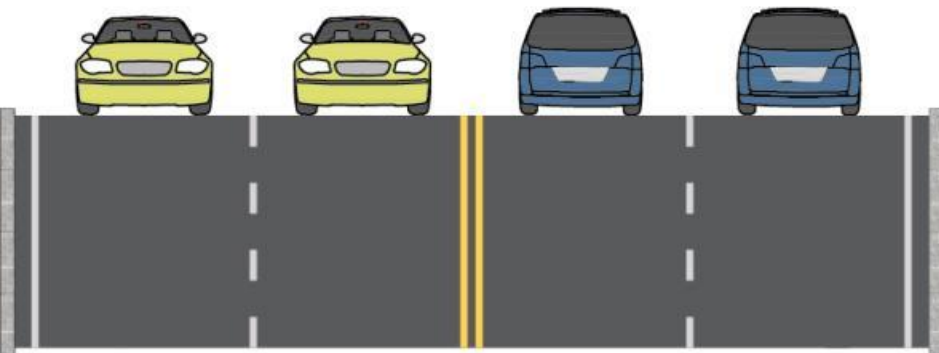
- New widened sidewalks
- ADA curb ramps
- New crosswalks with “bulb outs”
- Install rectangular rapid flashing beacon at crosswalks
- Enhanced transit stops





# Road Diet: 4-Lanes Converted to 2-Lanes

Before Road Diet



After Road Diet





# Road Diet: 4-Lanes Converted to 2-Lanes

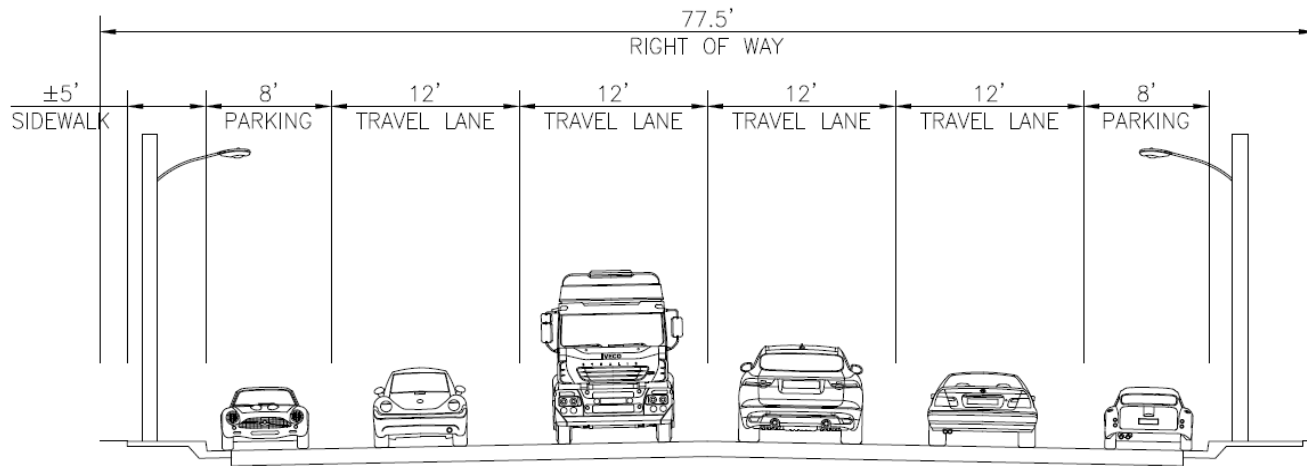
## Benefits per the Federal Highway Administration:

- “The resulting benefits include a crash reduction of 19 to 47 percent, reduced vehicle speed differential, improved mobility and access by all road users, and integration of the roadway into surrounding uses that results in an enhanced quality of life.”

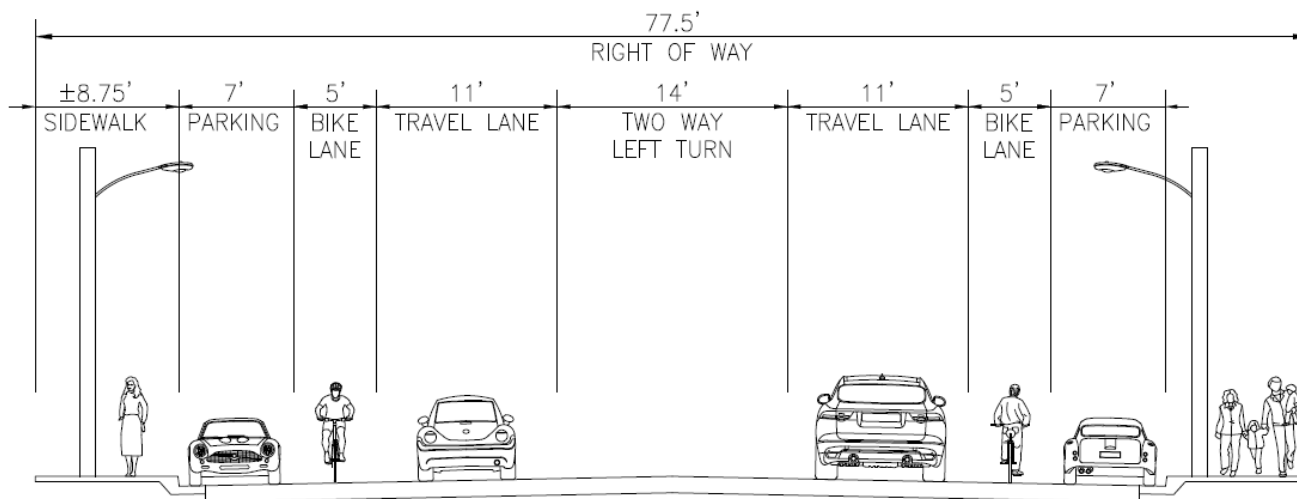




# Design Layout for Benicia Road: 4 to 2



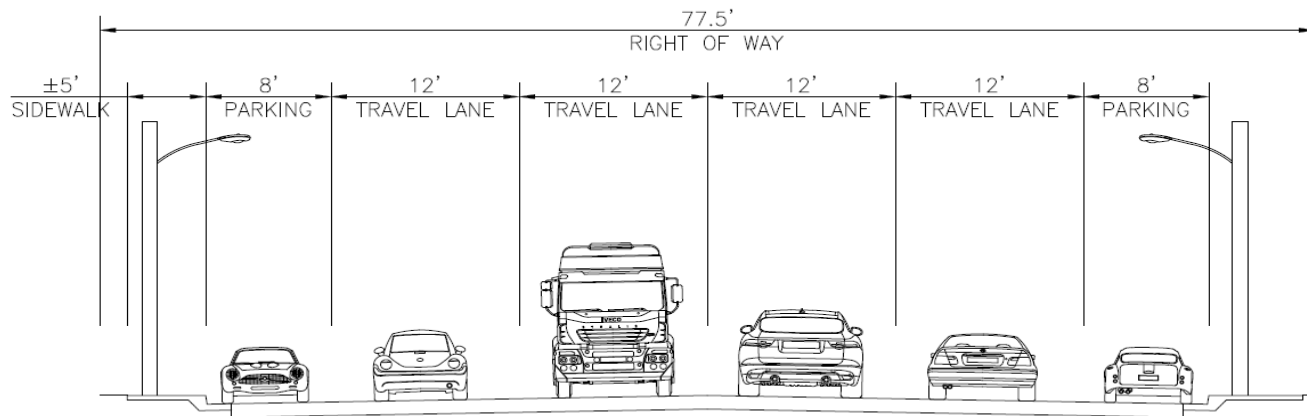
BENICIA RD BEFORE ROAD DIET



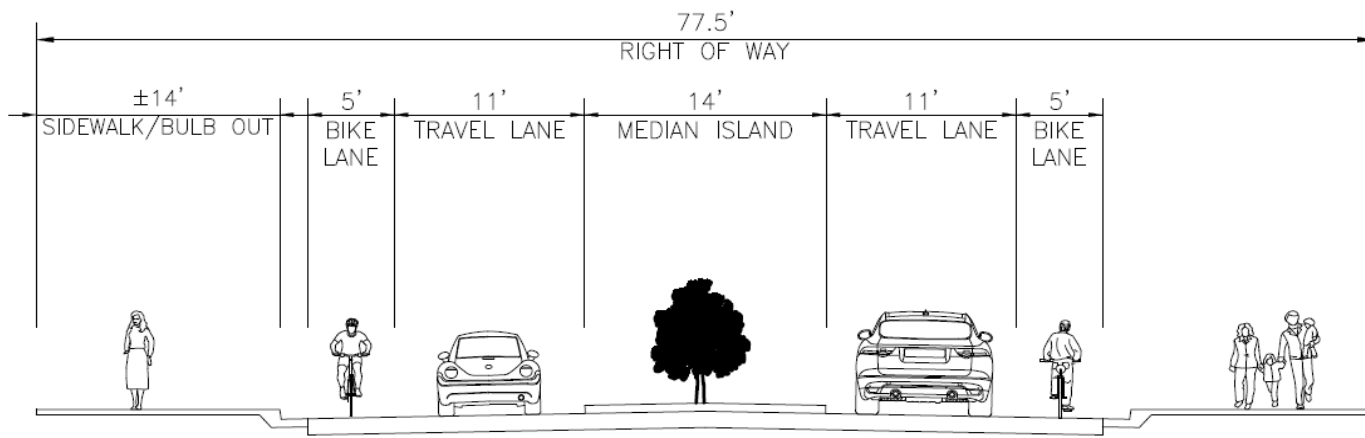
BENICIA RD AFTER ROAD DIET



# Design Layout of Benicia Road At Crosswalks



BENICIA RD BEFORE ROAD DIET



BENICIA RD AT CROSSWALK  
AFTER ROAD DIET





# Enhancements for Safety and Comfort

- Expanded sidewalks for improved walkability
- Bike lane additions
- Median refuge lane
- Street parking buffered by the bike lane
- New crosswalks with activated flashing lights
- Enhanced transit stops
- Traffic calming additions to slow speeds





# Design Strategies for Traffic Calming

- **Goal 1: Slower vehicle speeds**
  - **Colorized pavement areas at intersections/crosswalks**
  - **Condensed striping for driver perception**
  - **Speed limit review**
- **Goal 2: Improve decision-making by drivers, cyclists, and pedestrians:**
  - **Median refuge lane for turning movements**
  - **Reduced lanes simplify movements**
  - **New shortened crosswalks with flashing light additions**



# Construction Plans

---

- Prior to construction, residents will be notified 2 weeks in advance
- Access to residential property and businesses will be maintained as much as possible.
  - Temporary walk ramps will be installed as needed
- Stagger some work with 50/50 frontage builds to ensure accessibility
- Construction noise will be only between 8am to 5pm
- Will work with City of Vallejo and Utility agencies to minimize utilities impact



# Accessibility during Construction



Example: Pedestrian ramps will be implemented at some locations during construction to ensure access



# Project Status: We're A "Go"

---

- Anticipate a late-Summer to early-Fall construction start
- Current construction estimate of \$2.4 million
  - Received a \$134,000 Transportation For Clean Air Grant
  - Seeking additional Alternative Transportation Program funds to expand design and build alternatives
- Survey, design, and project delivery underway
- Currently performing Public Outreach for design and construction considerations



# Public Input Needed!

---

We need the following:

1. Comments about the concepts
2. Input on the interfaces with residences and businesses
3. Input on existing conditions that you would like to see changed
4. We can meet onsite with you!

Input options:

1. Write comments in chat
2. Email comments to [gcvalladares@solanocounty.com](mailto:gcvalladares@solanocounty.com)
3. Call Gladis Valladares at 707-784-6075 to provide verbal input



---

Questions?