



Solano County General Plan

Figure LU-1

Land Use Diagram

Legend

--- Municipal Service Areas

General Plan Land Use Designations

Natural Resource Designations

- Water Bodies and Courses
- Park and Recreation
- Marsh

Agricultural Designations

- Watershed
- Agriculture

Public Designations

- Public/Quasi-Public

Residential Designations

- Rural Residential
- Traditional Community - Residential
- Traditional Community - Mixed Use
- Urban Residential

Commercial Designations

- Neighborhood Commercial
- Neighborhood Agricultural/Tourist Center
- Commercial Recreation
- Service Commercial
- Highway Commercial
- Urban Commercial

Industrial Designations

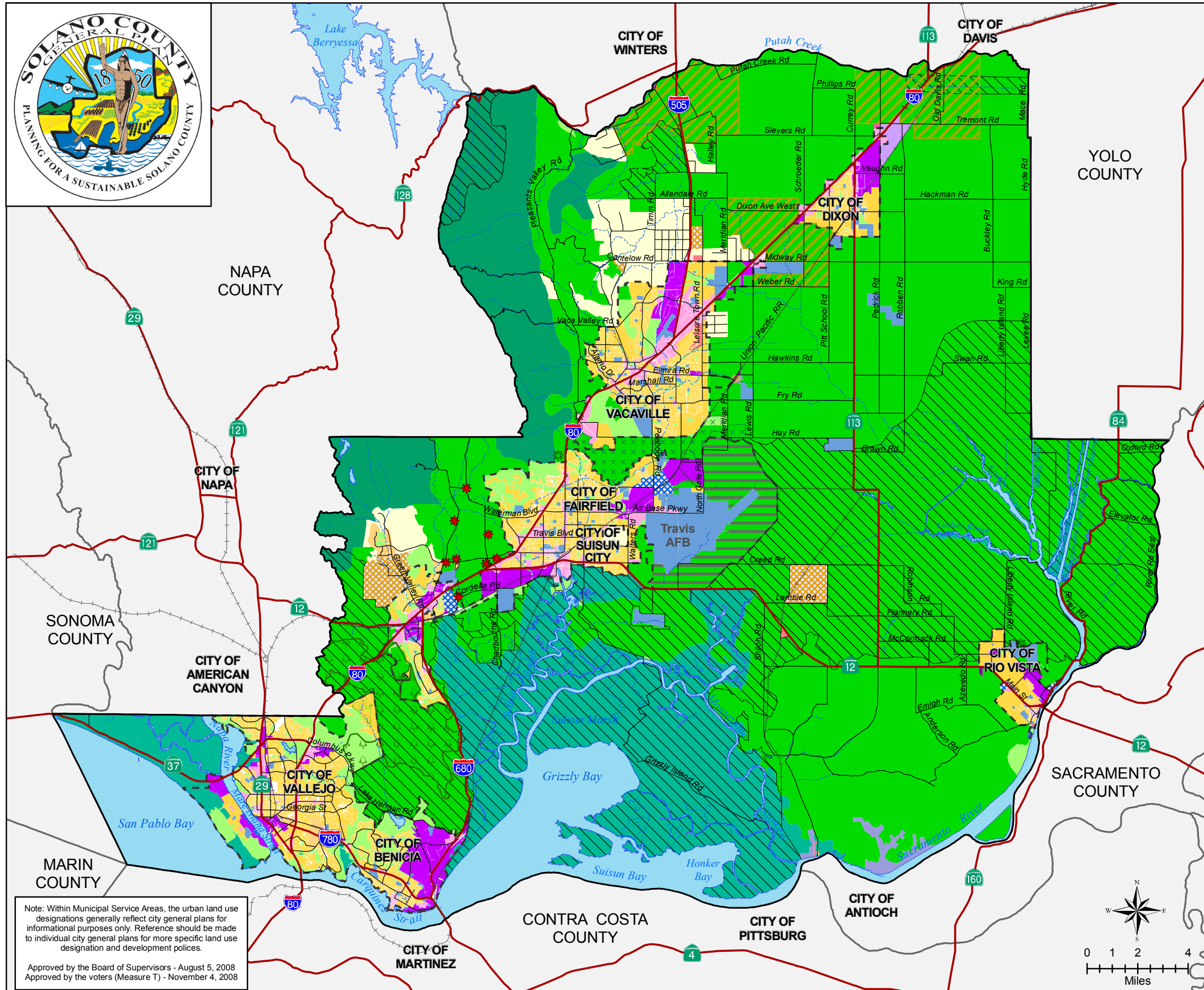
- General Industrial
- Limited Industrial
- Water Dependent Industrial
- Urban Industrial

Special Purpose Areas

- Joint Study Area
- Specific Project Area
- Urban Project Area

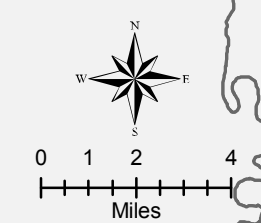
Overlays

- Vacaville-Fairfield-Solano Greenbelt
- Travis Reserve Area
- Agricultural Reserve Overlay
- Tri-City/County Cooperative Planning Area
- Resource Conservation Overlay



Note: Within Municipal Service Areas, the urban land use designations generally reflect city general plans for informational purposes only. Reference should be made to individual city general plans for more specific land use designation and development policies.

Approved by the Board of Supervisors - August 5, 2008
 Approved by the voters (Measure T) - November 4, 2008



"Planning for a Sustainable Solano County"