



# AIRPORT BUZZ

Nut Tree Airport, Vacaville California - Summer 2024



## Airport Elevator

If you have used the Airport elevator in the past year or so, you may have noticed a loud clunking sound when the elevator fires up in the morning. Our current elevator service company has diagnosed the issue and will be replacing the offending part to ensure a smoother (and quieter) ride. The elevator is scheduled to be fixed early next week, but in the meantime will remain “out of order”. If you have any issues in accessing the Admin Office on the 2<sup>nd</sup> floor using the stairs, please call the airport office at 707-469-4600 and a staff member will be happy to meet you in the lobby to assist you.



## Nut Tree Airport Advisory Committee (NTAAC) Vacancy

The Airport currently has a vacancy for a Committee Member on the Nut Tree Airport Advisory Committee, which meets every three months. The primary purpose of the committee is to advise the Board of Supervisors on matters pertaining to the operation and management of our airport.

The vacant position is specific to someone who has experience as a Business Pilot. If you are interested in volunteering your time and serving in this position, please fill out and return the attached application to the Airport Office no later than August 15<sup>th</sup>. Applications will then go to the Board of Supervisors for candidate selection and approval.

## Autopay

Starting July 1<sup>st</sup>, the office pivoted from office-entered autopay on monthly invoices, to tenant-driven autopay transactions. If you have not yet set up autopay for your payments, it is not too late. Please use the instructions emailed previously on the August 1<sup>st</sup> invoice.

There are also several tenants who were previously on autopay who have not yet paid their July invoice and the office has been unable to reach via email or phone. If you have been on autopay in the past but did not set up autopay in July - or use the one-time payment option to make your payment - you are likely overdue. Please contact the office for assistance.

(All tenants are encouraged to have their accounts on autopay to avoid late fees – most lease agreements require it.)

## Bay Cities 99s Host Flying Poker Run

On August 24<sup>th</sup>, the Bay Cities 99s are hosting a “Flying Poker Run” – a fun aviation way to raise money for scholarships for women pilots. The Nut Tree Airport, along with Reid-Hillview, Livermore, Tracy and Hayward Airports are all participating in this one-day event. It costs \$25 per hand. The event concludes at the Hayward Executive Airport at 1 pm with a BBQ. For more information please scan the QR code to register for the event and to buy a hand.



## Gate Card Renewal Invoices

Please keep an eye on your email for the annual gate card invoices. The invoices will be emailed out within the next week or so. As a reminder, one gate card is included with rental of a hangar or tie down, but any additional gate cards are an additional \$30 per year. Renewal each year is a way to verify who has gate cards and keep our Airport secure.

Lost gates cards should immediately be reported to the Airport office, so we can deactivate and re-issue. We appreciate prompt payment of gate card invoices to reduce administrative costs. Gate card invoices left unpaid past the due date will result in deactivation of the gate card.

## Rowland Freedom Center Event



The Rowland Freedom Center will be hosting their annual Planes, Trains and Automobiles as a 2-day event on September 21<sup>st</sup> and 22<sup>nd</sup> this year. The event will be held from 9 AM to 2 PM. More information will be forthcoming. If you would like more information on participating with the event, please contact Museum staff at (707) 301-0905.

## EAA Chapter 1230 – Guest Speaker Thane Lundberg

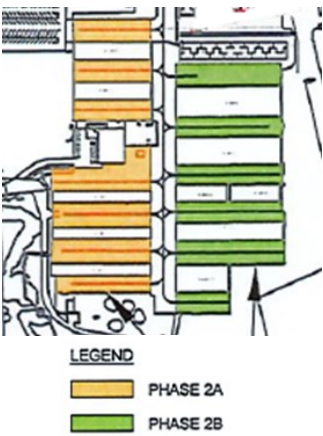
The next EAA meeting at the airport is August 13<sup>th</sup> at 5:30 pm. They have a special guest speaker this month – Thane Lundberg. He has 27 years’ experience as a Subsystems Test Engineer at Edwards AFB for starters, and has provided engineering support for the testing or maintenance of 86 different aircraft! Please plan to join the meeting if interested. For questions, email: [information.eaa1230@gmail.com](mailto:information.eaa1230@gmail.com)

# Grant Update – Nut Tree Receives another \$1 million

Airport Management received notification this month from the FAA Airport District Office that the Nut Tree Airport would be receiving another \$1 million to allow us to proceed with the full North East hangar taxilane 2a reconstruction project. (This is in addition to the \$1.66 million already slated for the project.) **With this additional funding, all 6 NE hangar taxilanes of Phase 2a will be reconstructed.** (see diagram below)

Receiving this additional million dollars was due to the concerted effort of our consulting firm Mead & Hunt, County and FAA staff. We appreciate everyone’s team effort to make that happen!

We will get the word out as soon as possible as to when this major airfield construction will begin. The estimate is Fall 2024/Spring 2025, but it will depend on when the Airport receives the grant funding.



## Hangar Wait List - Put the Word Out



After many years of long wait times for those interested in renting a hangar at the Nut Tree Airport, the wait list has finally caught up with demand. If you are interested - or know someone who is interested - in renting a hangar, please have them contact the office for a hangar wait list form. The current wait time is fairly short.

# Enterprise Is officially Open for Business at Nut Tree Airport

Starting Monday, July 29, the Enterprise Rent-A-Car service officially opened for business. We are excited to have this new operator at the Nut Tree Airport. Pilots flying in will now be able to get a rental car on site.

This has been a major effort by Enterprise – working closely with County staff - over the last year as they encountered asbestos in the office space, and delays during the construction of the dual car wash facility. State of the art, the car wash meets all Federal and state environmental and storm water prevention requirements.

Please welcome Enterprise and their staff to the airfield and be patient as they educate their customers on where to park when picking up or dropping off cars. They have 10 designated parking spots on the black top and additional overflow parking spaces in the grass adjacent to their spaces. Enterprise drivers are fully trained on driving on the active side of the airfield and will access the airfield only at the museum security gate. Rachel Jones is the Enterprise on-site manager.

## Upcoming Office Closures

Please be aware that the Airport Office will be closed Monday, September 2<sup>nd</sup> for Labor Day to honor all the “workers” of the world. Wishing you a safe and happy Labor Day weekend!



This recurring publication is for the benefit of our Nut Tree Airport tenants and stakeholders. If you have matters relevant to our Airport Community, and would like it included, please contact Molly Chatwin at the Office.