

SOLANO COUNTY INTERIM COVID-19 GUIDANCE FOR K-12 SCHOOLS

Developed by Sacramento County Public Health and adopted by Solano County Public Health 03/10/2022

STUDENT WITH NEW SYMPTOMS OF ILLNESS

Students with symptoms of illness should stay home and test for COVID-19.

- If test is negative, may return if at least 24 hours have passed since fever and symptoms have improved significantly.
- If test is positive, stay at home for 5 days. Isolation can end after Day 5 if symptoms are not present or are resolving and a diagnostic specimen collected on Day 5 or later tests negative. Consistent use of a well fitted face mask while indoors at school is **strongly recommended** through **Day 10**. If unable to test or choosing not to test, and symptoms are not present or are resolving, isolation can end after Day 10.

STUDENT EXPOSED TO PERSON WITH COVID-19 AT SCHOOL

Parents/Caregivers should be notified of the potential exposure. The student may continue to attend school as long as they do not develop symptoms of illness. Recommend the individual test for COVID-19 5 days after the exposure.

STUDENT EXPOSED TO PERSON WITH COVID-19 IN A NON-SCHOOL SETTING

The student may continue to attend school as long as they do not develop symptoms of illness. Recommend the student test for COVID-19 5 days after the exposure.

STUDENTS WHO HAVE TESTED POSITIVE FOR COVID-19 IN THE PAST 90 DAYS

Asymptomatic students that have tested positive for COVID-19 within the past 90 days are not required to quarantine or test for COVID-19 in response to a new COVID-19 exposure. However, if a child develops new symptoms after being exposed to COVID-19, they should isolate and test.

CONTINUOUS HOUSEHOLD EXPOSURE (PERSON LIVES WITH SOMEONE WITH COVID-19)

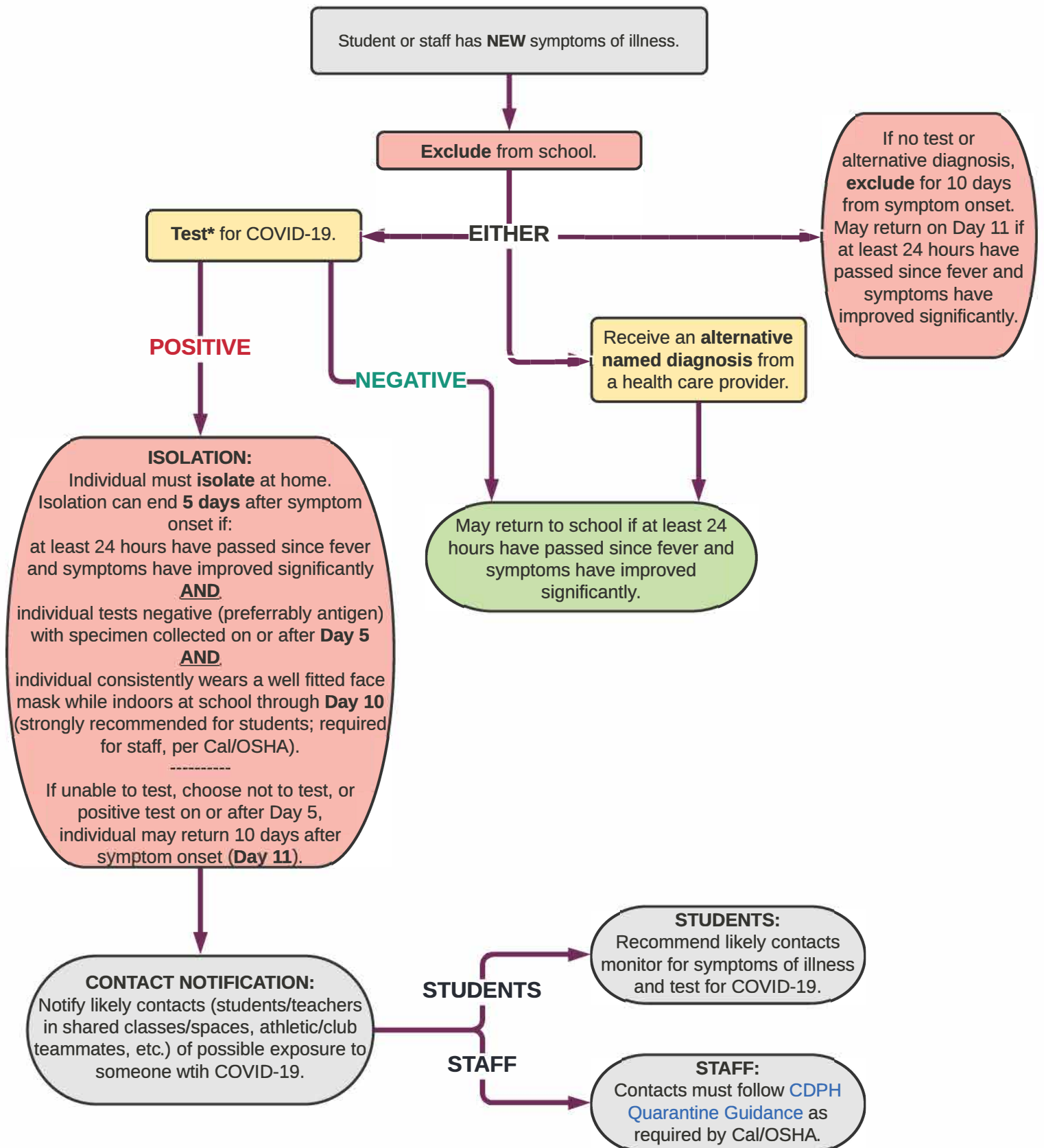
If a student lives with someone who has tested positive for COVID-19:

- If fully vaccinated (regardless of booster status), the student may continue to attend school as long as they do not develop symptoms of illness. The student should test for COVID-19 5 days after initial exposure.
- If not fully vaccinated, the student should quarantine. The quarantine period for the student can end at the completion of the isolation period for the **last** positive case in the household **if** close contact is asymptomatic and has a negative COVID-19 test.

CLASSROOM EXPERIENCES 3 OR MORE CASES OF COVID-19 WITHIN A TWO WEEK PERIOD

If a classroom/team/group has three or more cases of COVID-19 within a two week period, please contact us at schoolcict@solanocounty.com for further recommendations.

COVID-19 Decision Tree for K-12 Schools



* PCR or rapid antigen test are acceptable. Asymptomatic individuals who have tested positive for COVID-19 are not required to re-test for 90 days following their initial infection. However, if individuals develop new symptoms following a COVID-19 exposure, they should isolate and test.

Developed by Sacramento County Public Health and adopted by Solano County Public Health 3/10/22