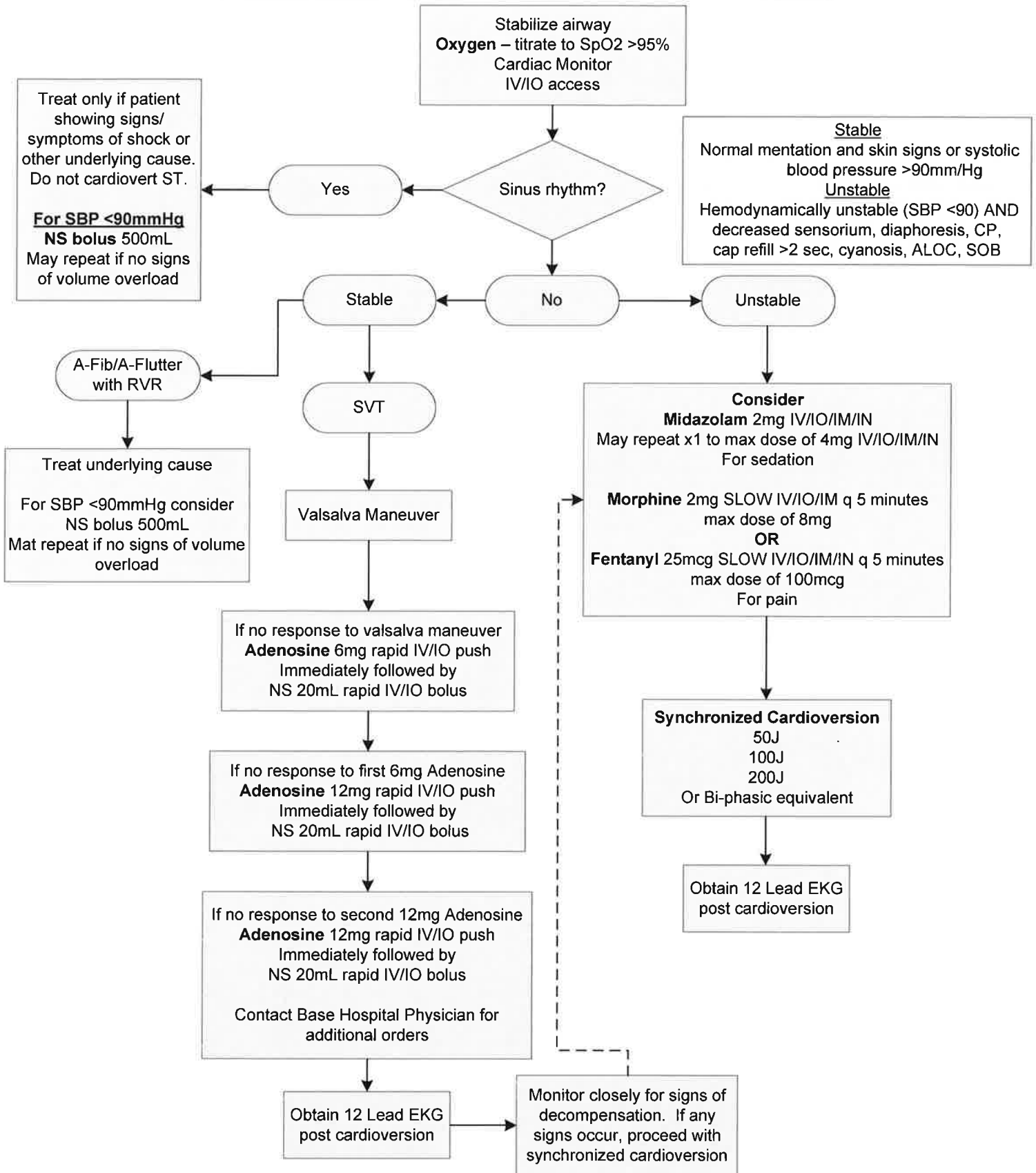


Cardiac Emergencies C-8 Narrow Complex Tachycardia



DISRUPTED COMMUNICATIONS

In the event of a "disrupted communications" situation where a base hospital physician CANNOT be contacted for orders, Solano County Paramedics MAY NOT utilize the portions of this protocol requiring base physician orders AND must transport to the closest receiving facility