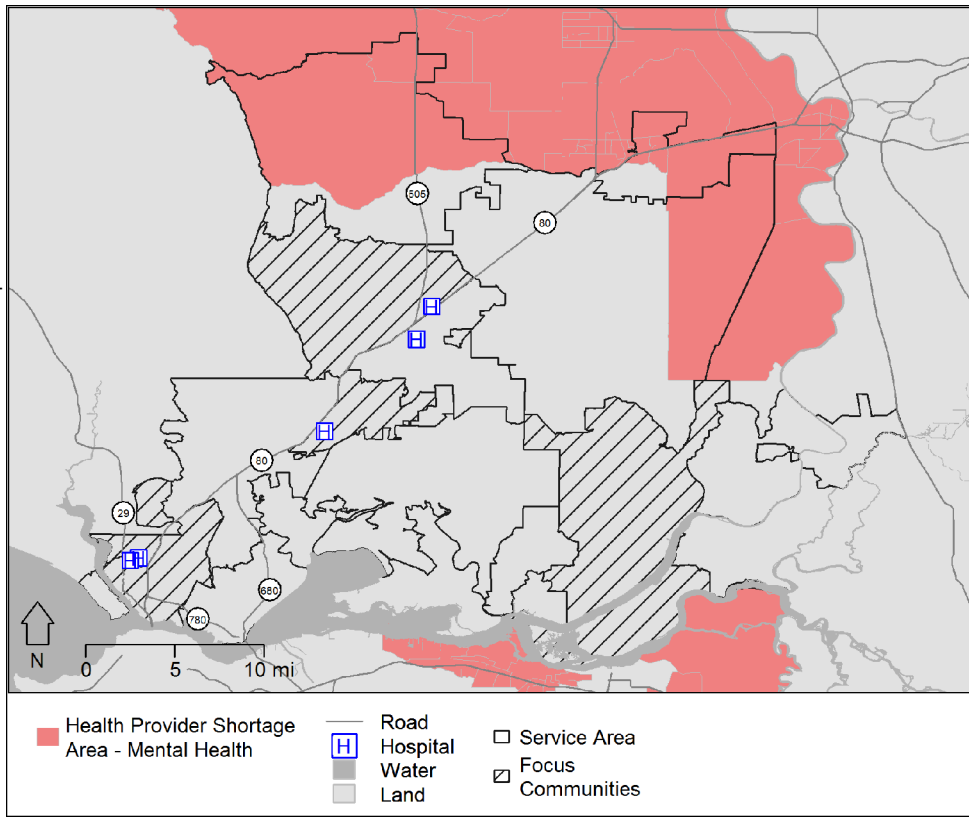


SOLANO COUNTY MENTAL HEALTH RATE BY ZIP CODE

Mental Health Professional Shortage Area

Source: Health Resources and Services Administration (HRSA) - Data Warehouse (accessed Aug. 29, 2015).
US Department of Health and Human Services



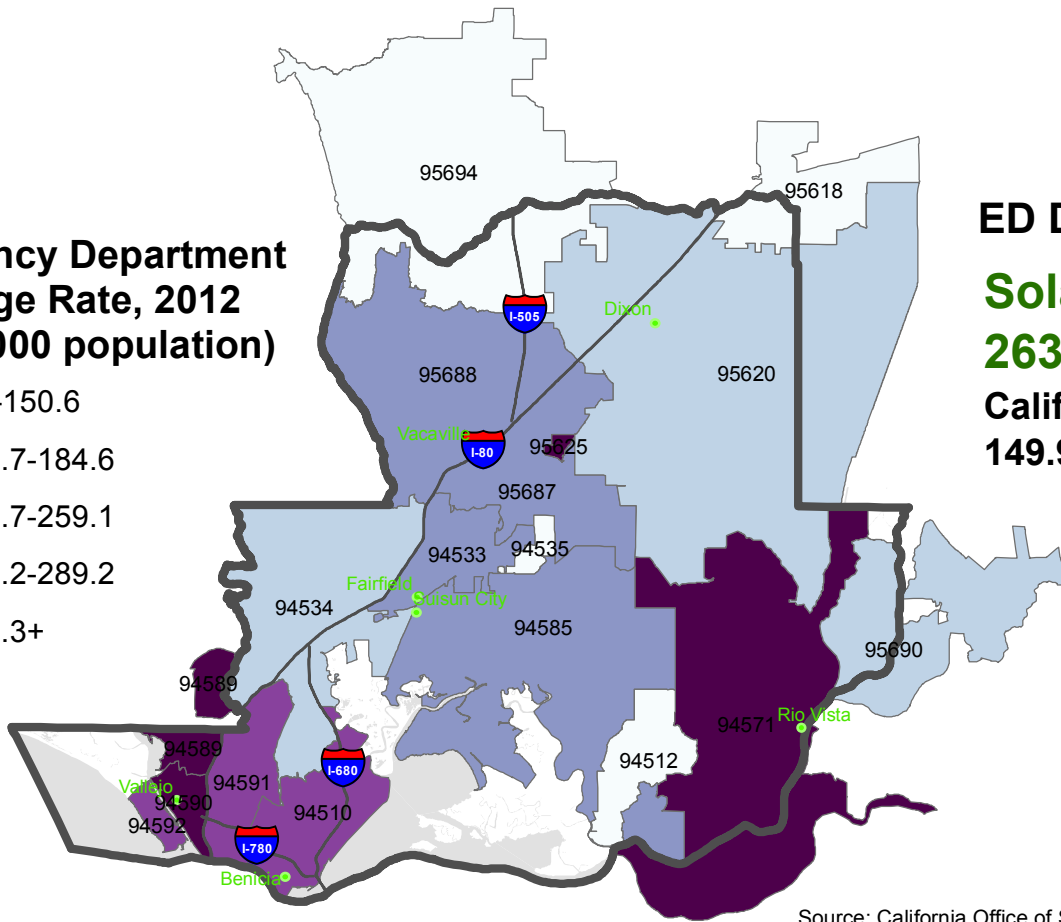
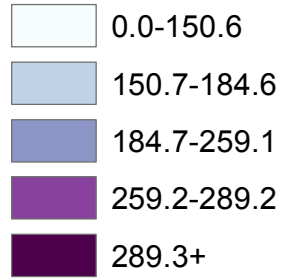
There are areas with **MENTAL HEALTH PROFESSIONAL SHORTAGES** in Solano County.

Number of Mental Health Care Providers per 100,000 Population:

Solano County: 169.5%
California: 157.0%

Source: County Health Rankings, 2014.
University of Wisconsin Population Health Institute

Emergency Department Discharge Rate, 2012 (per 10,000 population)



ED DISCHARGE RATE:

Solano County:
263.4 per 10,000
California:
149.9 per 10,000

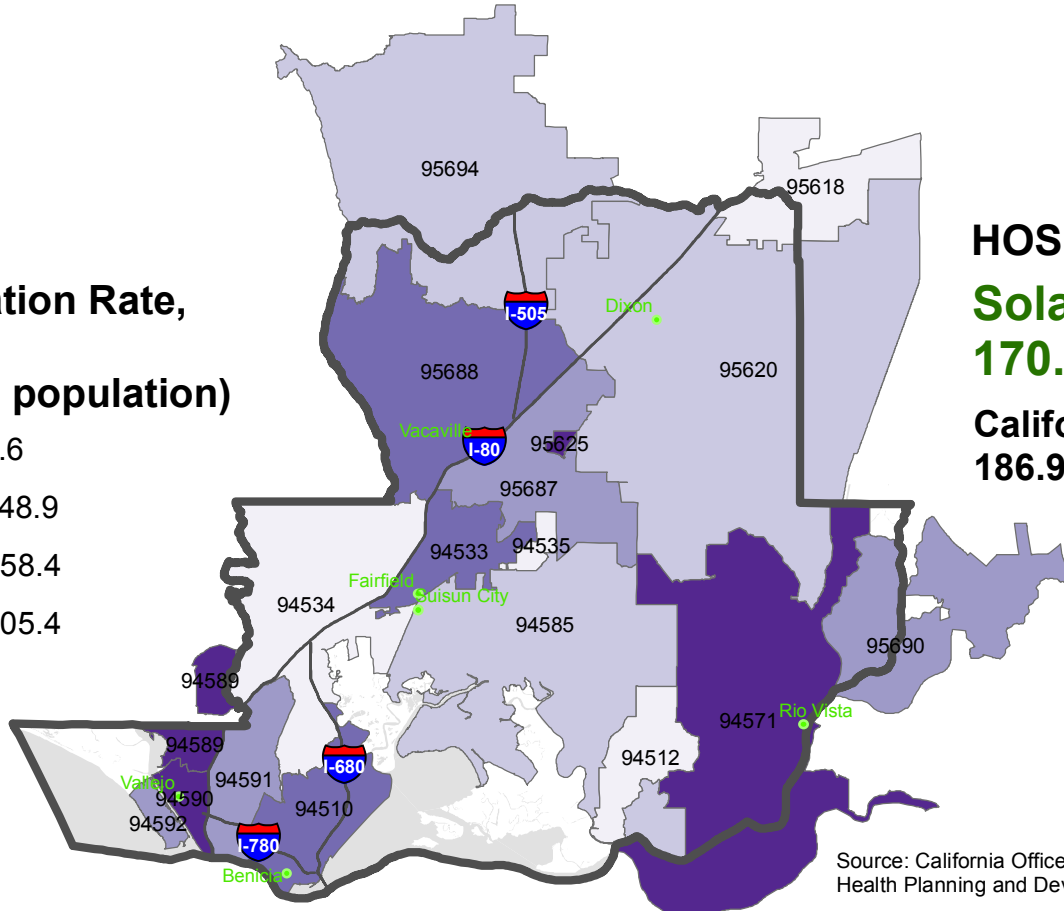
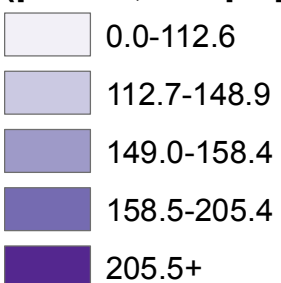
Source: California Office of Statewide Health Planning and Development (OSHPD)

Average Number of Mentally Unhealthy Days Per Month Among Adults 18 Years Old and Older:

Solano County: 3.3 Days
California: 3.6 Days

Source: Behavioral Risk Factor Surveillance System, 2006-2012
Centers for Disease Control and Prevention.
Accessed via the Health Indicators Warehouse.

Hospitalization Rate, 2012 (per 10,000 population)



HOSPITALIZATION RATE:

Solano County:
170.0 per 10,000
California:
186.9 per 10,000

Source: California Office of Statewide Health Planning and Development (OSHPD)



0 1.75 3.5 7 10.5 14 Miles