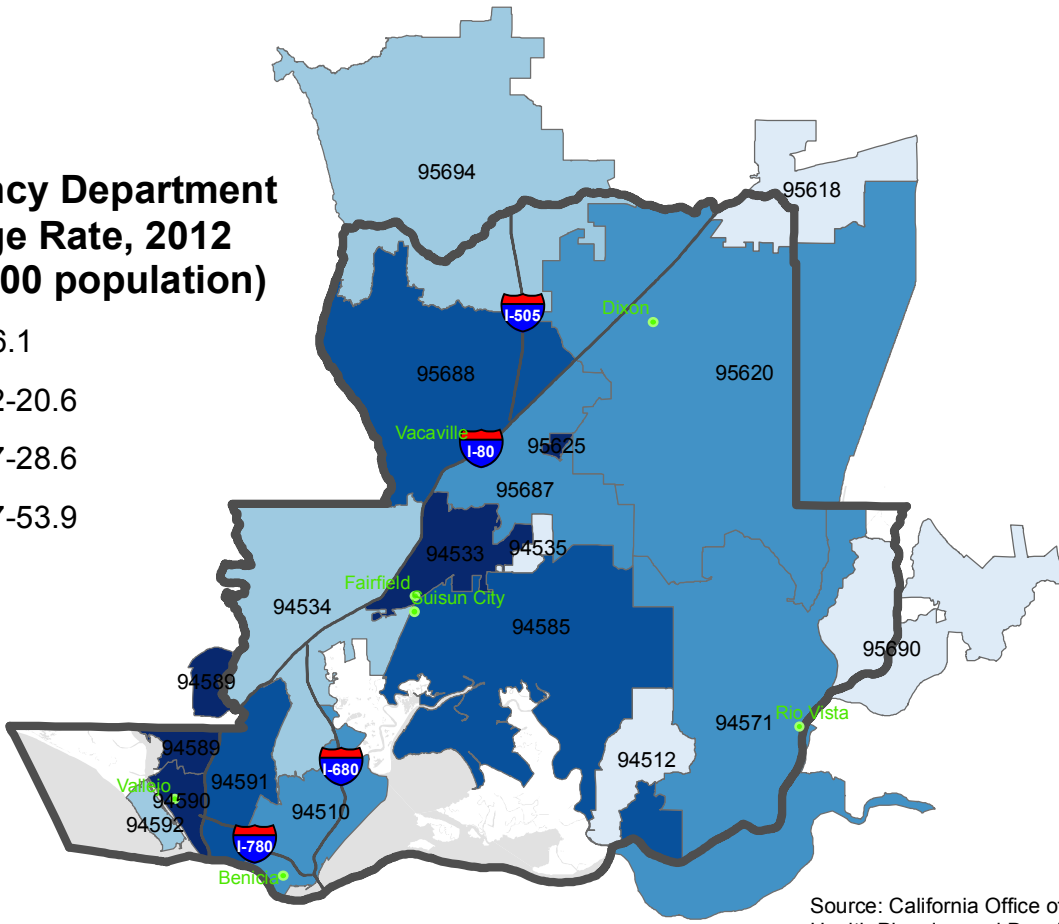
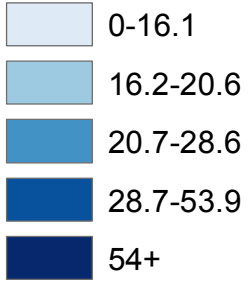


SOLANO COUNTY ASSAULT RATE BY ZIP CODE

Emergency Department Discharge Rate, 2012 (per 10,000 population)



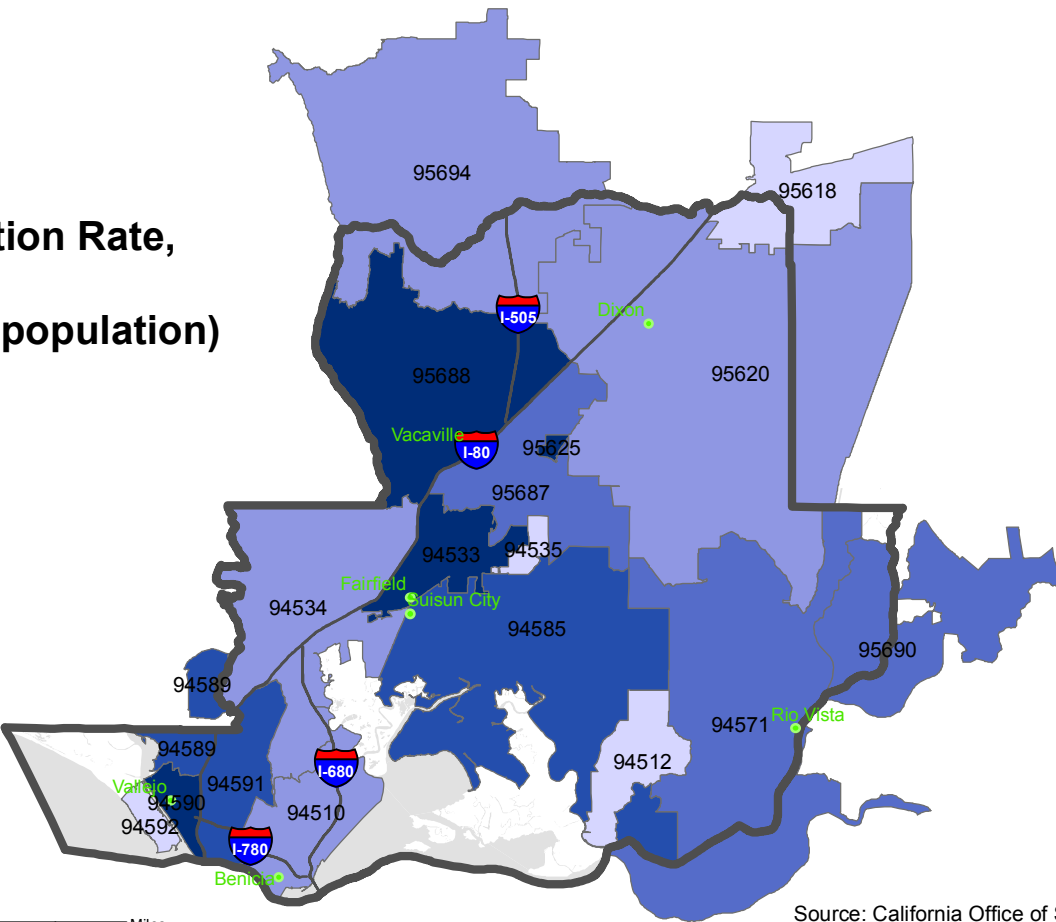
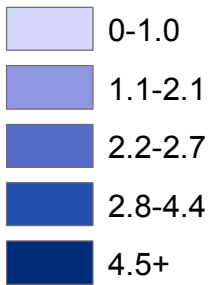
Source: California Office of Statewide Health Planning and Development (OSHPD)

Emergency department discharge rate for assault among **African Americans** was **2.9X** the rate among non-Hispanic Whites.

Solano County: 44.3 per 10,000
 African Americans (Solano County): 114.4 per 10,000
 non-Hispanic Whites (Solano County): 39.0 per 10,000
 California: 30.4 per 10,000

Source: California Office of Statewide Planning and Development (OSHPD), 2012

Hospitalization Rate, 2012 (per 10,000 population)



Source: California Office of Statewide Health Planning and Development (OSHPD)

Hospitalization rate for assault among **African Americans** was **4.5X** the rate among non-Hispanic Whites.

Solano County: 4.0 per 10,000
 African Americans (Solano County): 10.4 per 10,000
 non-Hispanic Whites (Solano County): 2.3 per 10,000
 California: 3.9 per 10,000

Source: California Office of Statewide Planning and Development (OSHPD), 2012

DOMESTIC VIOLENCE

The **City of Fairfield** had the **highest** reported rate of domestic violence in Solano County.

Solano County: 43.6 per 10,000 population
 City of Fairfield: 66.7 per 10,000 population
 California: 40.2 per 10,000 population

Source: Domestic violence-related calls for assistance, 2013. California Attorney General-Criminal Justice Statistics Center. <http://oag.gov/crime/cjsc/stats/domestic-violence>.

MAJOR CRIMES

The **City of Vallejo** had the **highest** reported rate of major crimes* in Solano County.

Solano County: 375.0 per 10,000 population
 City of Vallejo: 581.4 per 10,000 population
 California: 312.7 per 10,000 population

*Major crimes include violent crimes, property crimes, and arson

Source: Domestic violence-related calls for assistance, 2013. California Attorney General-Criminal Justice Statistics Center. <http://oag.gov/crime/cjsc/stats/domestic-violence>.