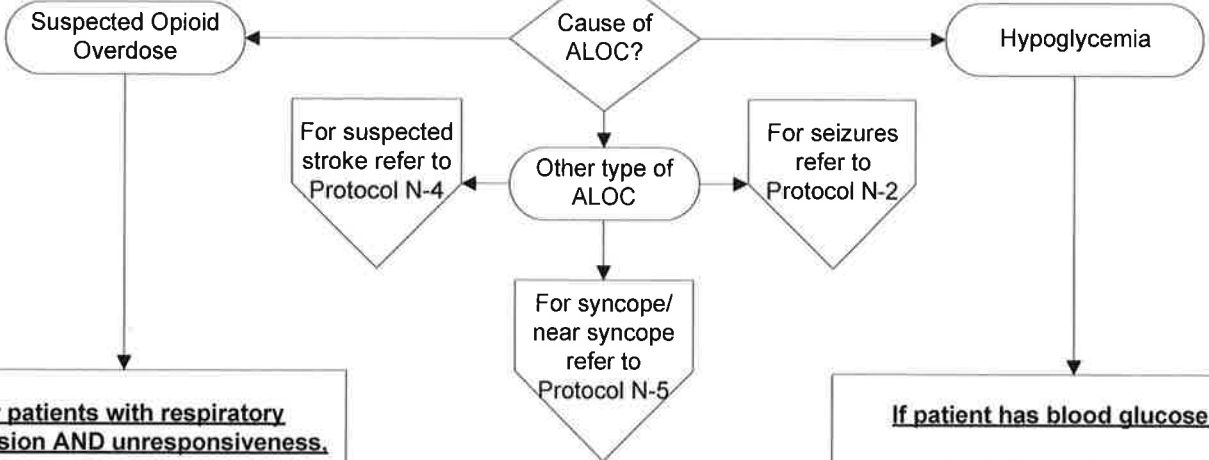


# Neurological Emergencies

## N-1 Altered Level of Consciousness

Stabilize airway using appropriate adjunct (BLS or ALS airway) if necessary  
**Oxygen** – titrate SpO2 ≥95%  
 OR  
**Oxygen** – High flow via BVM if patient is not breathing  
 Cardiac monitor  
 IV/IO access  
 Blood glucose check



**For patients with respiratory depression AND unresponsiveness, pinpoint pupils, or other signs of opioid overdose**

**Naloxone** 1mg IV/IO/IM  
 May repeat q1-2min to max of 2mg  
 OR  
**Naloxone** 2 – 4 mg IN

**If patient has blood glucose ≤70**

**Dextrose 50%** 25g IV/IO  
 May repeat once for persistent blood glucose ≤70

Consider  
**Oral Glucose** 1 prepackaged dose for patients who are alert and has a gag reflex

**If no IV/IO access and patient cannot take oral glucose**

**Glucagon** 1mg IM

**DISRUPTED COMMUNICATIONS**  
 In the event of a “disrupted communications” situation, Solano County Paramedics may utilize all portions of this treatment protocol without Base Hospital Contact as needed to stabilize an immediate patient.