

Pediatric Emergencies P-7 Allergic Reaction/Anaphylaxis

Priorities

Airway – stabilize using the appropriate adjuncts
 Be prepared for advanced airway interventions
 Remove antigen source if possible
 Identify level of severity of the reaction
 Early transport

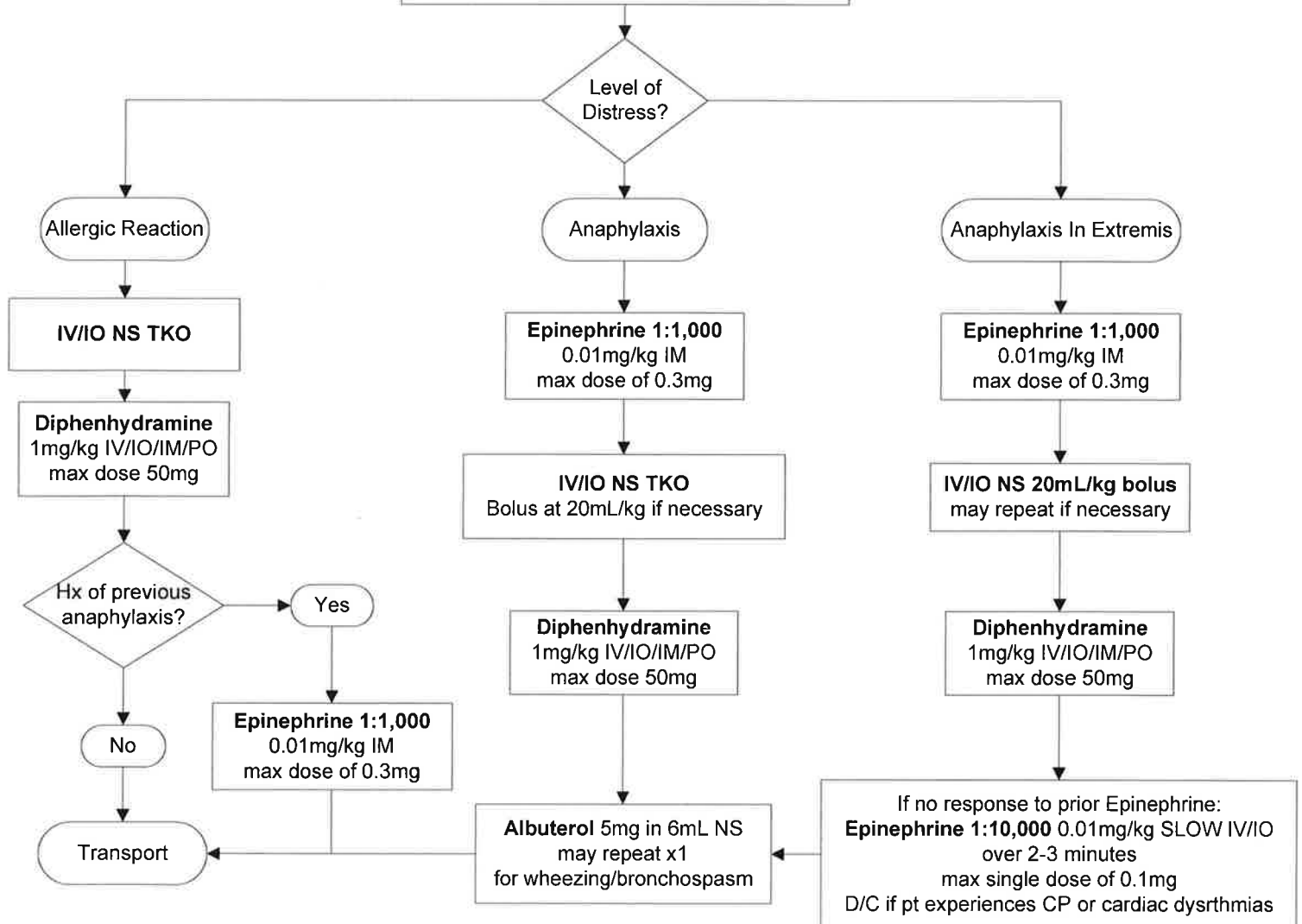
Levels of severity

Allergic Reaction: Acute onset cutaneous reactions, e.g. hives, pruritus, flushing, rash, or angioedema NOT involving the airway

Anaphylaxis: One or more of the following symptoms: stridor, wheezing, hoarseness, edema involving the airway, hypotension, tachycardia

Anaphylaxis In Extremis: age appropriate hypotension (reference Pediatric Basic Principles Attachment A), airway compromise, ALOC (agitation, restlessness, somnolence), severe respiratory distress

Oxygen – Titrate to SpO2 >97%
Cardiac Monitor
 Advanced Airway Interventions if necessary



DISRUPTED COMMUNICATIONS

In the event of a “disrupted communications” situation, Solano County Paramedics may utilize all portions of this treatment protocol without Base Hospital Contact as needed to stabilize an immediate patient.