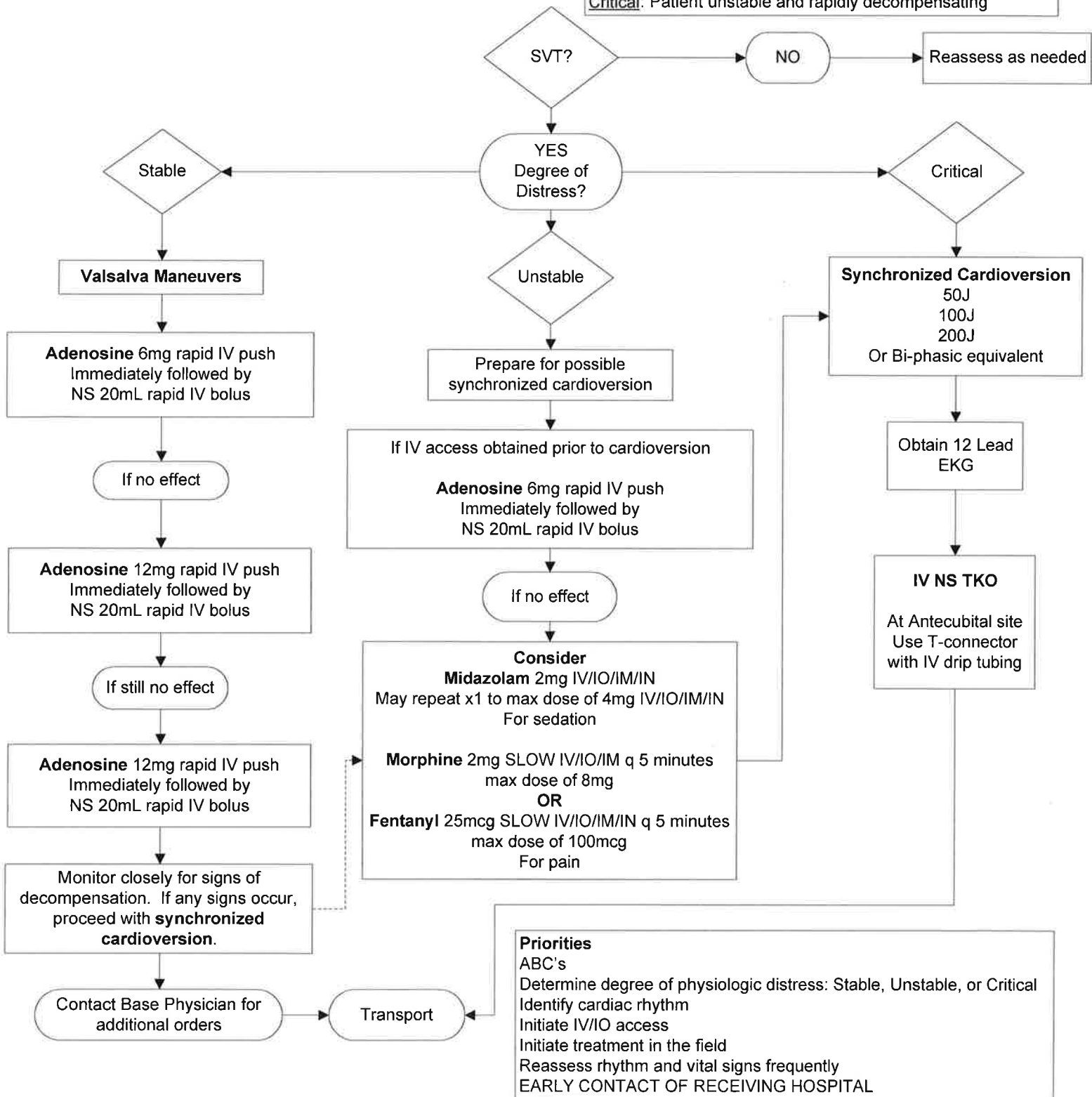


Cardiac Emergencies

C-8 Narrow Complex Tachycardia

Stabilize Airway
Oxygen – Titrate SpO2 to >95%
Be prepared to support ventilations with appropriate airway adjuncts
Cardiac Monitor

Stable: Normal mentation and skin signs or systolic blood pressure >90mm/Hg
Unstable: Hemodynamically unstable (SBP <90) AND decreased sensorium, diaphoresis, CP, cap refill >2 sec, cyanosis, ALOC, SOB
Critical: Patient unstable and rapidly decompensating



DISRUPTED COMMUNICATIONS

In the event of a "disrupted communications" situation where a base hospital physician CANNOT be contacted for orders, Solano County Paramedics MAY NOT utilize the portions of this protocol requiring base physician orders AND must transport to the closest receiving facility