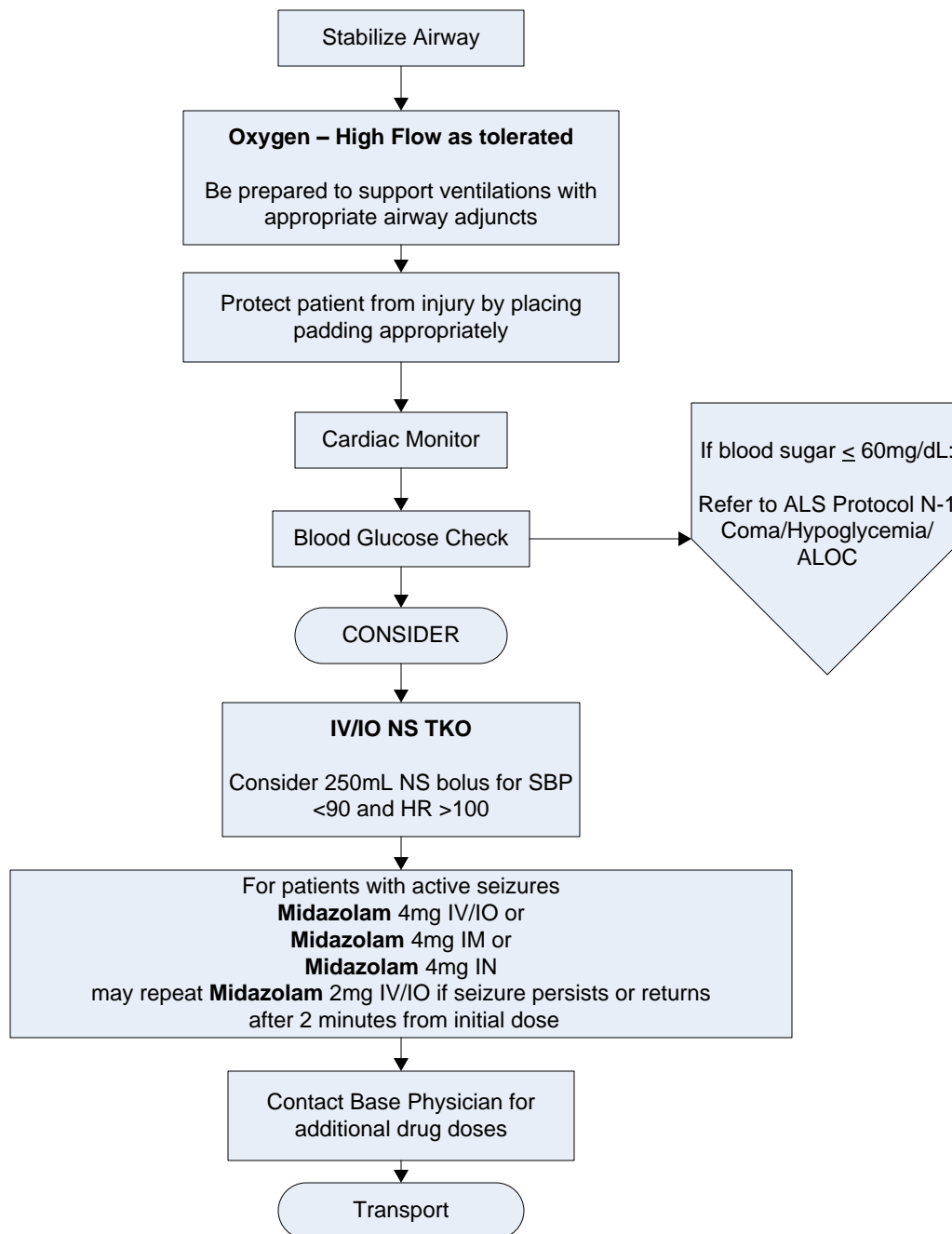


Neurologic Emergencies N-2 Seizures

PRIORITIES

Airway/Breathing/Circulation
 Maintain airway
 Support respiration
 Prevent bodily injury
 Determine degree of physiologic distress and possible cause of seizure
 Assess and document course of seizure
 Early transport
 Early contact of receiving hospital



DISRUPTED COMMUNICATIONS

In the event of a “disrupted communications” situation where a base hospital physician CANNOT be contacted for orders, Solano County Paramedics MAY NOT utilize the portions of this protocol requiring base physician orders AND must transport to the closest receiving facility