

# PATIO COVER TYPICAL CONCRETE SLAB

2-2" X 4" RWD BEAMS ATTACHED TO EITHER SIDE OF POSTS W/2-3/8" MACHINE BOLTS (TYP)

2" X 2" BATTENS O/ JOISTS

X RAFTER @ " O.C.

ALTERNATE IS TO USE X BEAM W/ APPROVED POST CAP BLOCK BETWEEN JOISTS O/BEAM

X POST @ FEET O.C.

2 X LEDGER W/APPROVED JOIST HANGER

BLOCK BETWEEN RAFTERS

3/8" X 5" LAG BOLT @ 32" O.C. TO (E) FRAME

(E) HOUSE

PATIO

SPAN FEET

APPROVED POST CONNECTION

ALTERNATE LEDGER CONNECTION

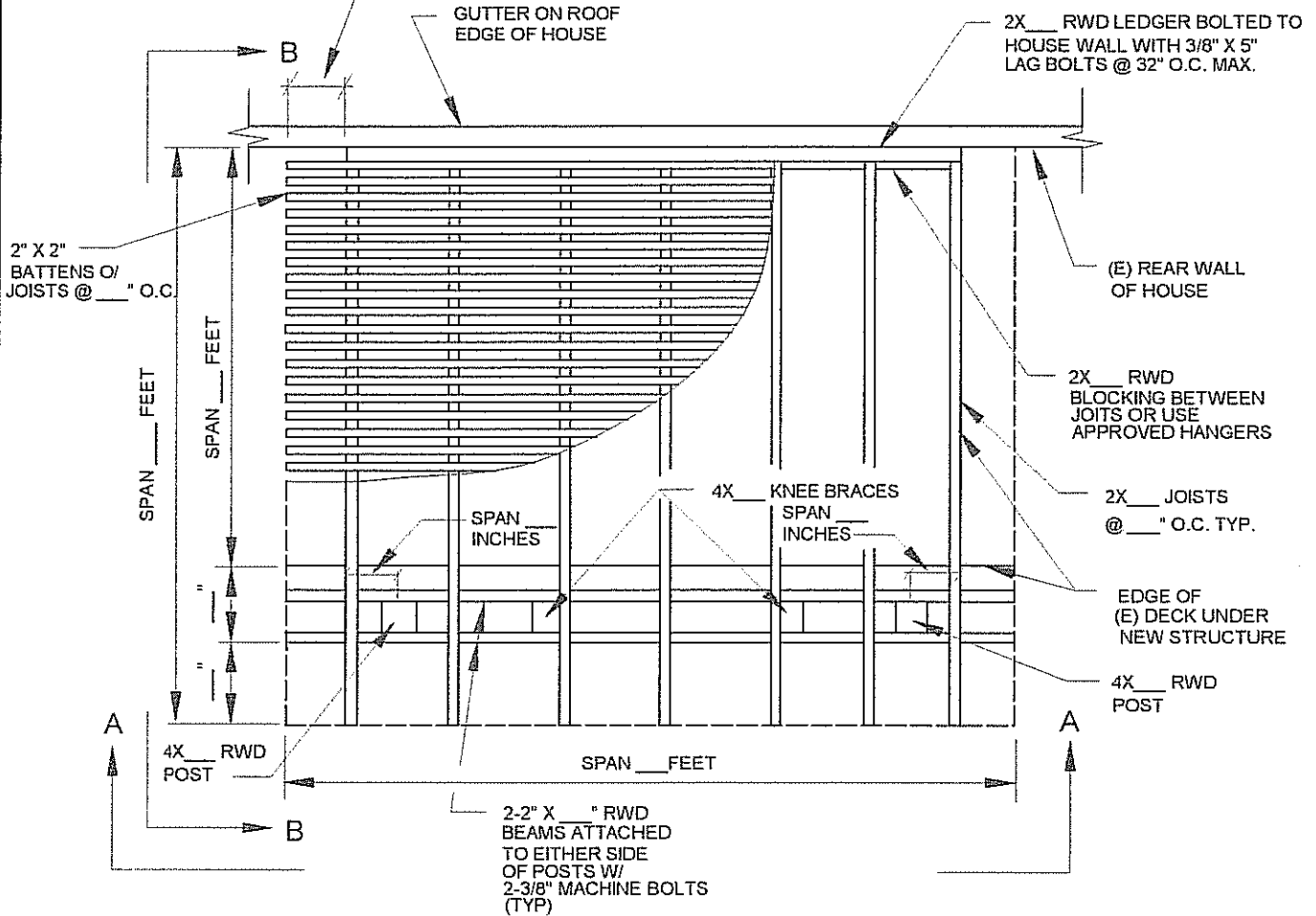
4" SLAB (TYP)

IF THE TRIBUTARY AREA SUPPORTED BY THE COLUMN DOES NOT EXCEED 57 SQUARE FEET A POST FOOTING IS NOT REQUIRED. PROVIDE AN APPROVED POST BASE CONNECTION TO THE EXISTING 3 1/2" MIN. THICK CONCRETE SLAB.

16" MIN.

ELEVATION B-B

# TYPICAL PATIO COVER CONSTRUCTION



## PLAN VIEW

